

## \$855,000 - 530 280 Portage Close, Sherwood Park

MLS® #E4314383

**\$855,000**

0 Bedroom, 0.00 Bathroom,  
Office on 0.00 Acres

Buckingham Business Park, Sherwood Park,  
AB

3,175 sq.ft office/warehouse space. Storage yard space available for lease. Grade level loading door 12'x14'. 2 stage sump. Minimum 20' clear ceiling height, 30' ceiling height at the peak.

Built in 2013

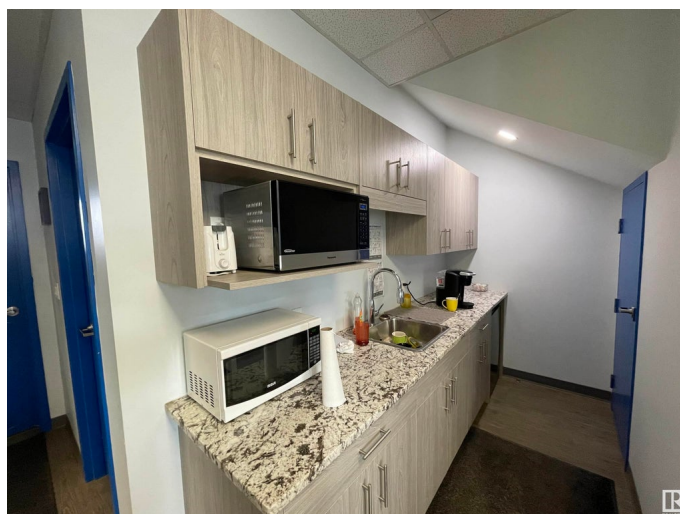
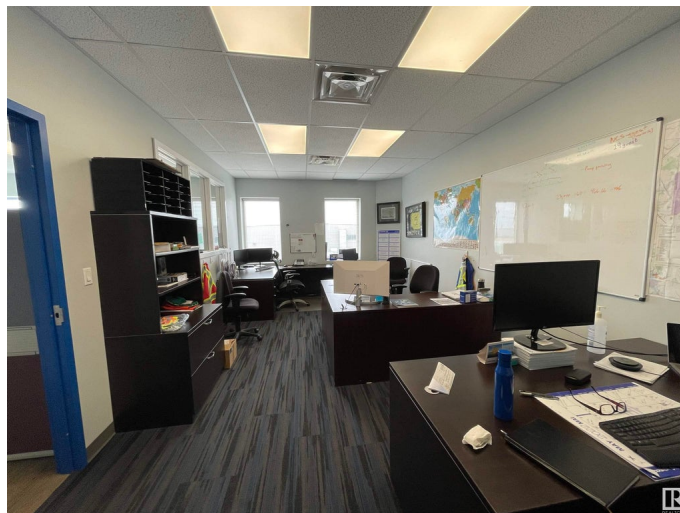
### Essential Information

MLS® #	E4314383
Price	\$855,000
Bathrooms	0.00
Acres	0.00
Year Built	2013
Type	Office
Status	Active

### Community Information

Address	530 280 Portage Close
Area	Sherwood Park
Subdivision	Buckingham Business Park
City	Sherwood Park
County	ALBERTA
Province	AB
Postal Code	T8H 2R6

### Exterior



Exterior	Steel Frame
Construction	Steel Frame

**Additional Information**

Date Listed	September 21st, 2022
Days on Market	946
Zoning	Zone 25

DATA IS DEEMED RELIABLE BUT IS NOT GUARANTEED ACCURATE BY THE REALTORS® ASSOCIATION OF EDMONTON. COPYRIGHT 2025 BY THE REALTORS® ASSOCIATION OF EDMONTON. ALL RIGHTS RESERVED.Trademarks are owned or controlled by the Canadian Real Estate Association (CREA) and identify real estate professionals who are members of CREA (REALTOR®, REALTORS®) and/or the quality of services they provide (MLS®, Multiple Listing Service®)

Listing information last updated on April 24th, 2025 at 3:32am MDT