

\$1,150,000

Annexed Area, Stony Plain, AB

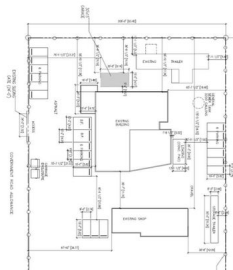
Architectural floor plan of the existing main floor layout. The plan shows various rooms including Hydroponics Flower Room #1 and #2, Flower Room #1 and #2, Lab #1 and #2, Lab #3, Lab #4, Lab #5, Lab #6, Lab #7, Lab #8, Lab #9, Lab #10, Lab #11, Lab #12, Lab #13, Lab #14, Lab #15, Lab #16, Lab #17, Lab #18, Lab #19, Lab #20, Lab #21, Lab #22, Lab #23, Lab #24, Lab #25, Lab #26, Lab #27, Lab #28, Lab #29, Lab #30, Lab #31, Lab #32, Lab #33, Lab #34, Lab #35, Lab #36, Lab #37, Lab #38, Lab #39, Lab #40, Lab #41, Lab #42, Lab #43, Lab #44, Lab #45, Lab #46, Lab #47, Lab #48, Lab #49, Lab #50, Lab #51, Lab #52, Lab #53, Lab #54, Lab #55, Lab #56, Lab #57, Lab #58, Lab #59, Lab #60, Lab #61, Lab #62, Lab #63, Lab #64, Lab #65, Lab #66, Lab #67, Lab #68, Lab #69, Lab #70, Lab #71, Lab #72, Lab #73, Lab #74, Lab #75, Lab #76, Lab #77, Lab #78, Lab #79, Lab #80, Lab #81, Lab #82, Lab #83, Lab #84, Lab #85, Lab #86, Lab #87, Lab #88, Lab #89, Lab #90, Lab #91, Lab #92, Lab #93, Lab #94, Lab #95, Lab #96, Lab #97, Lab #98, Lab #99, Lab #100. The plan also shows a central hallway, restrooms, and a reception area. Dimensions are provided for various rooms and overall building dimensions. A scale bar indicates 1/8" = 1'-0". A note states "BUILDING AREA = 6879.3 SQ. FT."

Essential Information

| | |
|------------|-------------|
| MLS® # | E4387080 |
| Price | \$1,150,000 |
| Bathrooms | 0.00 |
| Acres | 0.00 |
| Year Built | 1973 |
| Type | Industrial |
| Status | Active |

Community Information

SITE PLAN



Exterior

| | |
|--------------|-------|
| Exterior | Mixed |
| Construction | Mixed |

Additional Information

| | |
|----------------|----------------|
| Date Listed | May 13th, 2024 |
| Days on Market | 342 |
| Zoning | Zone 91 |

DATA IS DEEMED RELIABLE BUT IS NOT GUARANTEED ACCURATE BY THE REALTORS® ASSOCIATION OF EDMONTON. COPYRIGHT 2025 BY THE REALTORS® ASSOCIATION OF EDMONTON. ALL RIGHTS RESERVED.Trademarks are owned or controlled by the Canadian Real Estate Association (CREA) and identify real estate professionals who are members of CREA (REALTOR®, REALTORS®) and/or the quality of services they provide (MLS®, Multiple Listing Service®)

Listing information last updated on April 20th, 2025 at 6:47am MDT