

\$0 - 2920 101 Street, Edmonton

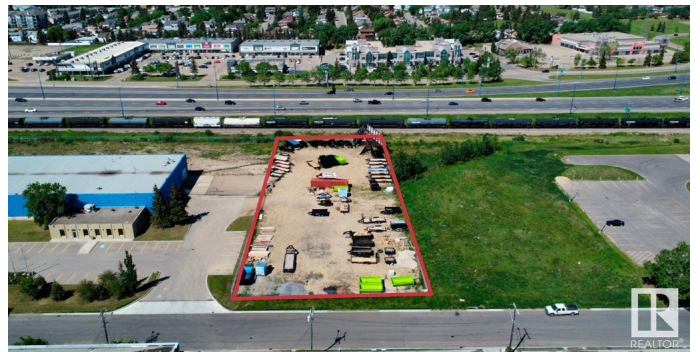
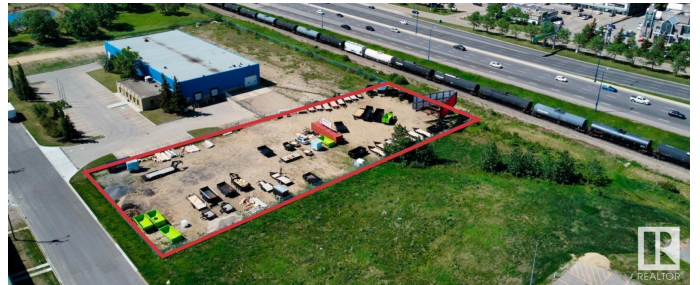
MLS® #E4402941

\$0

0 Bedroom, 0.00 Bathroom,
Land Commercial on 0.00 Acres

Parsons Industrial, Edmonton, AB

Rare industrial land parcel for lease with fantastic exposure to QE2 - 1.09 acres - approximately 140 ft. x 340 ft. - Access via area to the south and south curb crossing at building (joint access) - Electric gate - fully fenced and secured - Ideal for: Equipment and trailer storage, vehicle parking, fleet parking - Excellent access to QE2, Anthony Henday and Whitemud. Power available onsite for potential office trailer.



Essential Information

MLS® #	E4402941
Bathrooms	0.00
Acres	0.00
Type	Land Commercial
Status	Active

Community Information

Address	2920 101 Street
Area	Edmonton
Subdivision	Parsons Industrial
City	Edmonton
County	ALBERTA
Province	AB
Postal Code	T6N 1A6

Additional Information

Date Listed August 21st, 2024

Days on Market 205

Zoning Zone 41

DATA IS DEEMED RELIABLE BUT IS NOT GUARANTEED ACCURATE BY THE REALTORS® ASSOCIATION OF EDMONTON. COPYRIGHT 2025 BY THE REALTORS® ASSOCIATION OF EDMONTON. ALL RIGHTS RESERVED. Trademarks are owned or controlled by the Canadian Real Estate Association (CREA) and identify real estate professionals who are members of CREA (REALTOR®, REALTORS®) and/or the quality of services they provide (MLS®, Multiple Listing Service®)

Listing information last updated on March 14th, 2025 at 8:17am MDT