

\$465,500 - 236 Rolston Wynd, Leduc

MLS® #E4412265

\$465,500

4 Bedroom, 3.00 Bathroom, 1,636 sqft

Single Family on 0.00 Acres

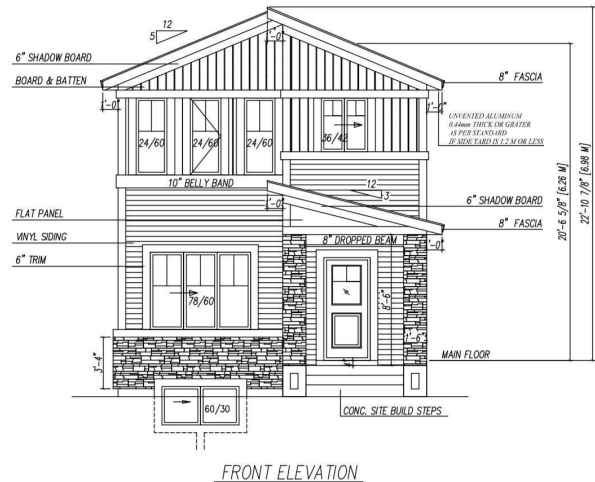
Robinson, Leduc, AB

Welcome to Your dream Home in Robinson, Leduc ,Located just 5 minutes from the international airport and the new airport shopping mall, this stunning new construction offers exceptional value and luxury. This beautiful home features a versatile main floor bedroom and full bathroom, perfect for multi-generational living or a home office. The open layout includes a spacious great room and chef's kitchen, ideal for entertaining. Upstairs, you'll find a large family room, two generous bedrooms, two full bathrooms, and a convenient laundry area plus bonus room perfect for growing families. The unfinished basement with a separate entry offers potential for personalization, making this home a great choice for first time homebuyers ,large families and investors. Great opportunity for job to be customize.

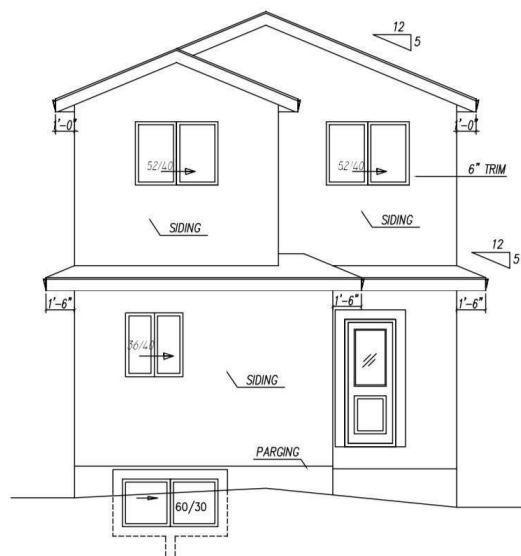
Built in 2024

Essential Information

MLS® #	E4412265
Price	\$465,500
Bedrooms	4
Bathrooms	3.00
Full Baths	3
Square Footage	1,636
Acres	0.00



FRONT ELEVATION



REAR ELEVATION

Year Built	2024
Type	Single Family
Sub-Type	Detached Single Family
Style	2 Storey
Status	Active

Community Information

Address	236 Rolston Wynd
Area	Leduc
Subdivision	Robinson
City	Leduc
County	ALBERTA
Province	AB
Postal Code	T9E 1N1

Amenities

Amenities	No Animal Home, No Smoking Home
Parking	Parking Pad Cement/Paved

Interior

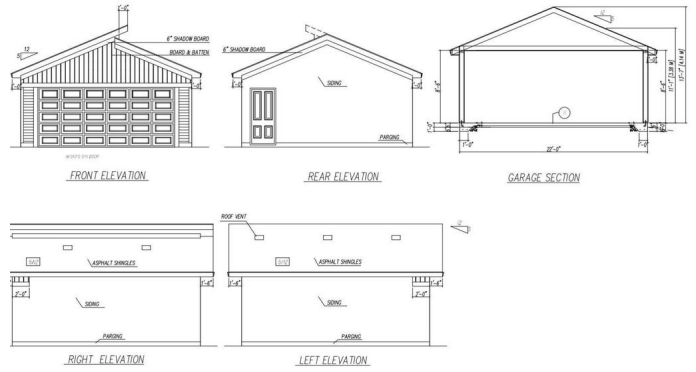
Interior Features	ensuite bathroom
Appliances	None
Heating	Forced Air-1, Natural Gas
Fireplace	Yes
Fireplaces	See Remarks
Stories	2
Has Basement	Yes
Basement	Full, Unfinished

Exterior

Exterior	Wood, See Remarks
Exterior Features	Airport Nearby, Playground Nearby, Shopping Nearby
Roof	Asphalt Shingles
Construction	Wood, See Remarks
Foundation	Concrete Perimeter

Additional Information

Date Listed	October 31st, 2024
Days on Market	134



DATA IS DEEMED RELIABLE BUT IS NOT GUARANTEED ACCURATE BY THE REALTORS® ASSOCIATION OF EDMONTON. COPYRIGHT 2025 BY THE REALTORS® ASSOCIATION OF EDMONTON. ALL RIGHTS RESERVED. Trademarks are owned or controlled by the Canadian Real Estate Association (CREA) and identify real estate professionals who are members of CREA (REALTOR®, REALTORS®) and/or the quality of services they provide (MLS®, Multiple Listing Service®)

Listing information last updated on March 14th, 2025 at 1:06pm MDT