

\$220,000 - 200 220 Lakeland Dr, Sherwood Park

MLS® #E4413025

\$220,000

0 Bedroom, 0.00 Bathroom,
Business on 0.00 Acres

Sherwood Business Park, Sherwood Park, AB

This well-established Pizza business operation is perfectly situated in a high-traffic location, ensuring a constant flow of customers and robust sales. Restaurant is almost 2200 sq. ft. featuring brand-new equipment and ready for immediate operation. Ideal for both new and experienced owners looking for a turnkey, high-potential opportunity. Also, open to provide training.

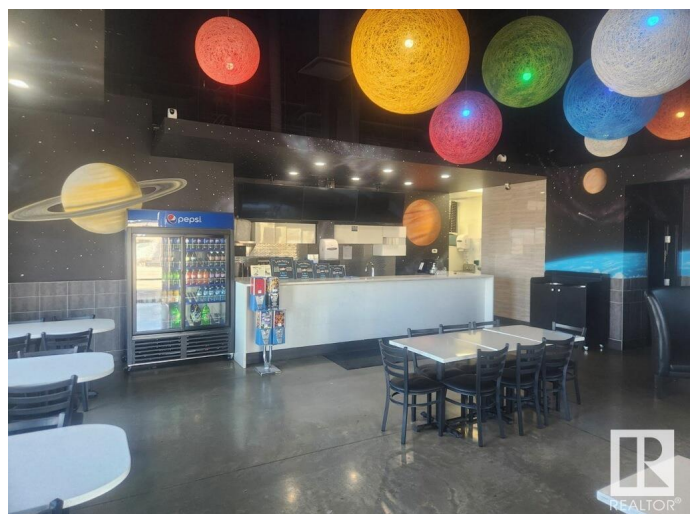
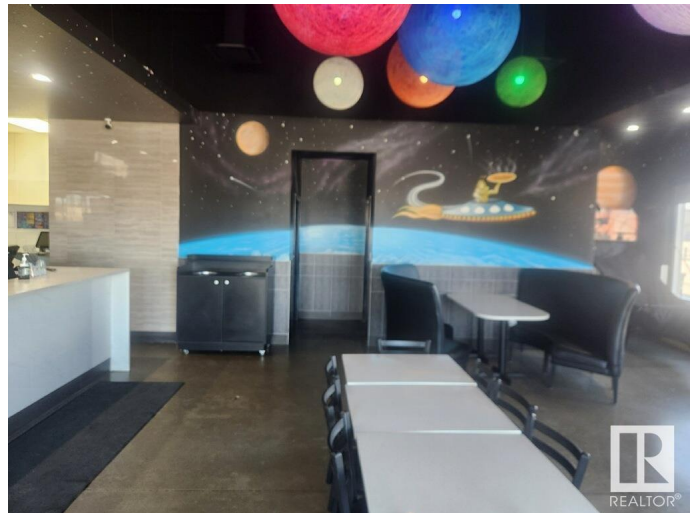
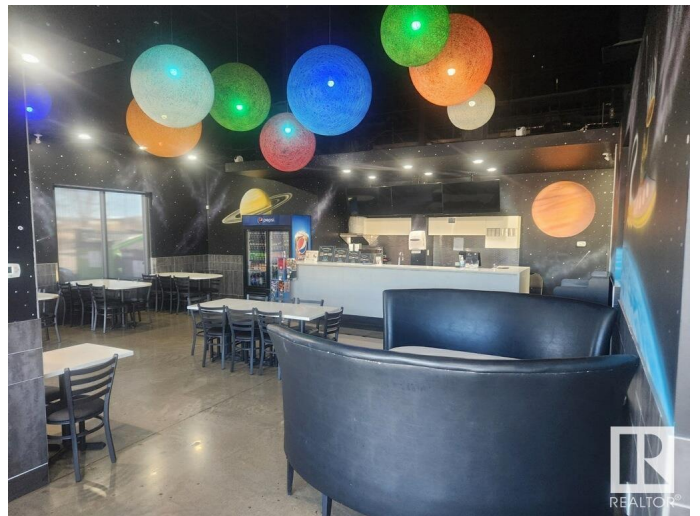
Essential Information

MLS® #	E4413025
Price	\$220,000
Bathrooms	0.00
Acres	0.00
Type	Business
Status	Active

Community Information

Address	200 220 Lakeland Dr
Area	Sherwood Park
Subdivision	Sherwood Business Park
City	Sherwood Park
County	ALBERTA
Province	AB
Postal Code	T8H 0N6

Additional Information



Date Listed November 6th, 2024

Days on Market 148

Zoning Zone 25

DATA IS DEEMED RELIABLE BUT IS NOT GUARANTEED ACCURATE BY THE REALTORS® ASSOCIATION OF EDMONTON. COPYRIGHT 2025 BY THE REALTORS® ASSOCIATION OF EDMONTON. ALL RIGHTS RESERVED. Trademarks are owned or controlled by the Canadian Real Estate Association (CREA) and identify real estate professionals who are members of CREA (REALTOR®, REALTORS®) and/or the quality of services they provide (MLS®, Multiple Listing Service®)

Listing information last updated on April 3rd, 2025 at 1:47am MDT