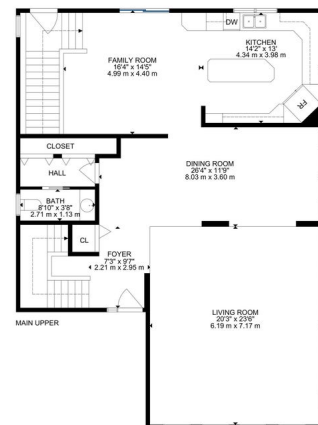


\$849,000 - 10503 135 Street, Edmonton

MLS® #	E4417135
Price	\$849,000
Bedrooms	3
Bathrooms	3.50



GROSS INTERNAL AREA
BASEMENT: 96 m², 1022 SQ FT, MAIN LEVEL: 150 m², 1614 SQ FT, MAIN LEVEL: 123 m², 1323 SQ FT
EXCLUDED AREAS: GARAGE: 44 m², 473 SQ FT
TOTAL: 366 m², 3959 SQ FT
SIZE AND DIMENSIONS ARE APPROXIMATE. ACTUAL MAY VARY

Full Baths	3
Half Baths	1
Square Footage	2,939
Acres	0.00
Year Built	1949
Type	Single Family
Sub-Type	Detached Single Family
Style	2 Storey
Status	Active

Community Information

Address	10503 135 Street
Area	Edmonton
Subdivision	Glenora
City	Edmonton
County	ALBERTA
Province	AB
Postal Code	T5N 2C8

Amenities

Amenities	Deck, Front Porch, Vaulted Ceiling
Parking	Double Garage Attached

Interior

Interior Features	ensuite bathroom
Appliances	Dishwasher-Built-In, Dryer, Garage Control, Garage Opener, Refrigerator, Stove-Electric, Washer, Window Coverings
Heating	Forced Air-1, Hot Water, Natural Gas
Fireplace	Yes
Fireplaces	Mantel
Stories	3
Has Basement	Yes
Basement	Full, Finished

Exterior

Exterior	Wood, Vinyl
Exterior Features	Corner Lot, Fenced, Paved Lane, Playground Nearby, Public Transportation, Schools
Roof	Asphalt Shingles

Construction	Wood, Vinyl
Foundation	Concrete Perimeter

School Information

Elementary	Glenora, St Vincent
Middle	Westminster
High	Ross Shep, Mac

Additional Information

Date Listed	January 6th, 2025
Days on Market	104
Zoning	Zone 11

DATA IS DEEMED RELIABLE BUT IS NOT GUARANTEED ACCURATE BY THE REALTORS® ASSOCIATION OF EDMONTON. COPYRIGHT 2025 BY THE REALTORS® ASSOCIATION OF EDMONTON. ALL RIGHTS RESERVED.Trademarks are owned or controlled by the Canadian Real Estate Association (CREA) and identify real estate professionals who are members of CREA (REALTOR®, REALTORS®) and/or the quality of services they provide (MLS®, Multiple Listing Service®)

Listing information last updated on April 20th, 2025 at 2:02am MDT