

# \$634,900 - 112 150 Chippewa Road, Sherwood Park

MLS® #E4417872

**\$634,900**

0 Bedroom, 0.00 Bathroom,  
Industrial on 0.00 Acres

Broadmoor Centre, Sherwood Park, AB

COMMERCIAL CONDO WITH MIXED USES.TWO PARKING STALLS IN FRONT 1500 SQ FT ON MAIN FLOOR & 1000 SQ FT M/L MEZZANINE WITH A GREAT STAIRCASE.MAIN FLOOR HAS BATHROOM & STORAGE 10X14 OVERHEAD DOOR ,GREAT LOCATION .MINUTES FROM ANTHONY HENDAY FREEWAY.LOTS OF NATURAL LIGHT IN THIS UNIT QUICK POSSESSION.CONDO FEES ARE \$525.15

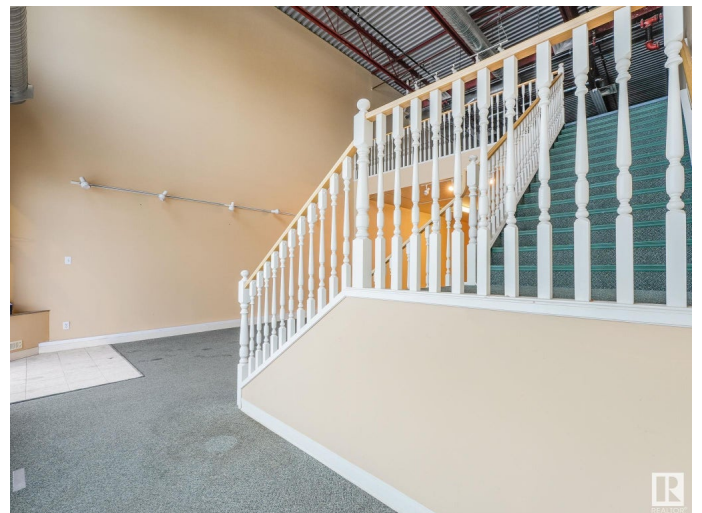
Built in 2003

## Essential Information

MLS® #	E4417872
Price	\$634,900
Bathrooms	0.00
Acres	0.00
Year Built	2003
Type	Industrial
Status	Active

## Community Information

Address	112 150 Chippewa Road
Area	Sherwood Park
Subdivision	Broadmoor Centre
City	Sherwood Park
County	ALBERTA
Province	AB



Postal Code T8A 6A2

### **Exterior**

Exterior Tilt-Up

Construction Tilt-Up

### **Additional Information**

Date Listed January 11th, 2025

Days on Market 62

Zoning Zone 25

DATA IS DEEMED RELIABLE BUT IS NOT GUARANTEED ACCURATE BY THE REALTORS® ASSOCIATION OF EDMONTON. COPYRIGHT 2025 BY THE REALTORS® ASSOCIATION OF EDMONTON. ALL RIGHTS RESERVED. Trademarks are owned or controlled by the Canadian Real Estate Association (CREA) and identify real estate professionals who are members of CREA (REALTOR®, REALTORS®) and/or the quality of services they provide (MLS®, Multiple Listing Service®)

Listing information last updated on March 14th, 2025 at 12:02pm MDT