

\$339,900 - N/A, Edmonton

MLS® #E4417928

\$339,900

1 Bedroom, 1.00 Bathroom, 515 sqft
Condo / Townhouse on 0.00 Acres

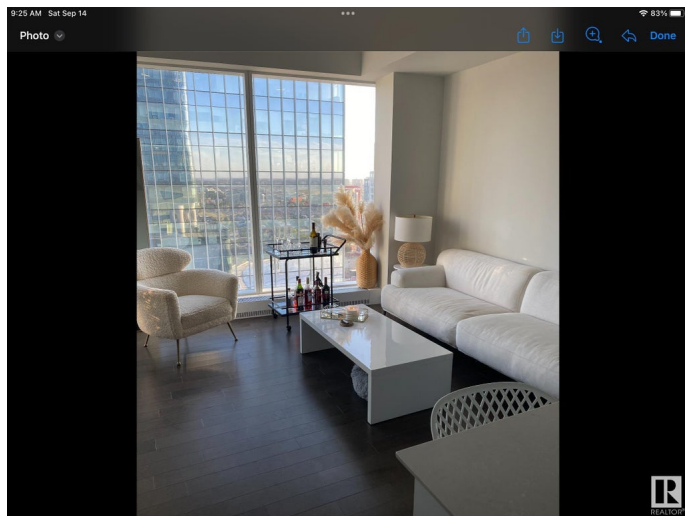
Downtown (Edmonton), Edmonton, AB

One of the nicest layouts with WIDER Living Room Space One titled underground Parking Stall. Enjoy a condo lifestyle with all the first class amenities above the J.W. MARRIOT HOTEL. Enjoy unlimited access to ARCHETYPE Body by Bennet GYM, Indoor swimming pool, Hot Tub , Steam room and Yoga, Spin and boxing classes. Amenities like BILLIARDS Lounge, PET WALK AREA, OUT DOOR PATIO AND BBQ ,ROOFTOP DECK, CONFERENCE ROOM. 24/7 CONCIERGE SERVICE. PEDWAY system direct access to LRT ,Grocery Market ,restaurants and more. The LEGENDS PRIVATE RESIDENCE IN THE ICE DISTRICT a great place to call home.

Built in 2019

Essential Information

MLS® #	E4417928
Price	\$339,900
Bedrooms	1
Bathrooms	1.00
Full Baths	1
Square Footage	515
Acres	0.00
Year Built	2019
Type	Condo / Townhouse



Sub-Type	Apartment High Rise
Style	Single Level Apartment
Status	Active

Community Information

Address	N/A
Area	Edmonton
Subdivision	Downtown (Edmonton)
City	Edmonton
County	ALBERTA
Province	AB
Postal Code	T5J 0K6

Amenities

Amenities	Intercom, Parking-Visitor, Security Door, Social Rooms, Concierge Service, Rooftop Deck/Patio
Parking Spaces	1
Parking	Underground

Interior

Appliances	Air Conditioning-Central, Dishwasher-Built-In, Garage Opener, Hood Fan, Oven-Built-In, Oven-Microwave, Refrigerator, Stacked Washer/Dryer, Stove-Countertop Electric
Heating	Fan Coil, Natural Gas
# of Stories	54
Stories	1
Has Basement	Yes
Basement	None, No Basement

Exterior

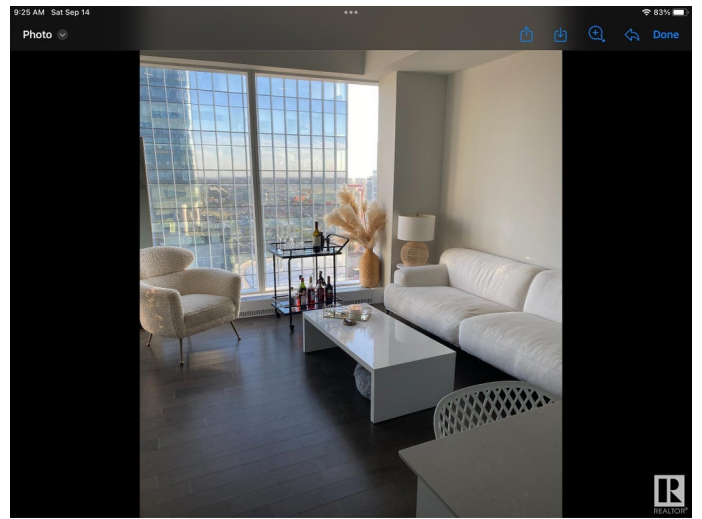
Exterior	Concrete, Metal
Exterior Features	Golf Nearby, Shopping Nearby, View Downtown
Roof	EPDM Membrane
Construction	Concrete, Metal
Foundation	Concrete Perimeter

Additional Information

Date Listed	January 13th, 2025
Days on Market	87
Zoning	Zone 12

Condo Fee

\$680



DATA IS DEEMED RELIABLE BUT IS NOT GUARANTEED ACCURATE BY THE REALTORS® ASSOCIATION OF EDMONTON. COPYRIGHT 2025 BY THE REALTORS® ASSOCIATION OF EDMONTON. ALL RIGHTS RESERVED. Trademarks are owned or controlled by the Canadian Real Estate Association (CREA) and identify real estate professionals who are members of CREA (REALTOR®, REALTORS®) and/or the quality of services they provide (MLS®, Multiple Listing Service®)

Listing information last updated on April 10th, 2025 at 5:02pm MDT