

\$419,900 - 9 1729 Keene Crescent, Edmonton

MLS® #E4420173

\$419,900

3 Bedroom, 2.50 Bathroom, 1,272 sqft
Condo / Townhouse on 0.00 Acres

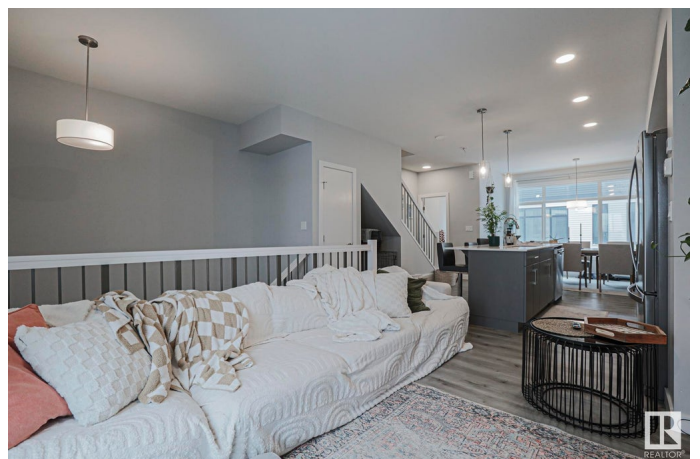
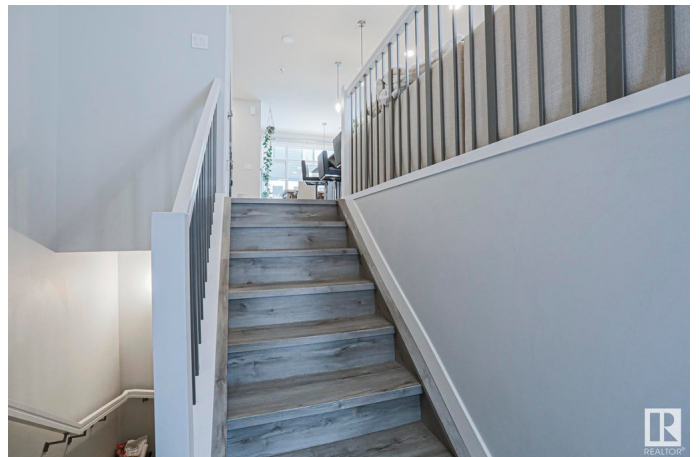
Keswick Area, Edmonton, AB

Beautiful 3 bed 2.5 bath Townhouse Condo Unit with a double attached Garage on the 3rd level! LOW condo fee of \$189.00, and an Absolute STUNNER of a home! Super modern in the Keswick area with 10/10 AMENITIES! walking distance to the new Italian Bakery, Movati athletics studio, Freson bros, daycare, green space, parks and all other amenities! It's all here!! This Unit is BRIGHT, with huge windows letting a ton of light in. Vinyl plank flooring, quartz counter tops, modern style, sweet front patio deck w a BBQ. GORGEOUS kitchen w barstool seating, GIANT island, ss appliances, shaker cabinets, and a HUGE window in the dining area letting the light in. Half bath on the main floor, and 3 bedrooms upstairs! Primary bedroom has a 4 pc ensuite bathroom, and there's 2 more bedrooms and another 4 pc bath! Basement has the double garage, and a lil bit of room for storage :) Stellar Home! Park both your cars, Incredible neighbourhood! Everything you need right here!

Built in 2019

Essential Information

MLS® #	E4420173
Price	\$419,900
Bedrooms	3



Bathrooms	2.50
Full Baths	2
Half Baths	1
Square Footage	1,272
Acres	0.00
Year Built	2019
Type	Condo / Townhouse
Sub-Type	Townhouse
Style	2 Storey
Status	Active

Community Information

Address	9 1729 Keene Crescent
Area	Edmonton
Subdivision	Keswick Area
City	Edmonton
County	ALBERTA
Province	AB
Postal Code	T6W 4B6

Amenities

Amenities	Deck, No Smoking Home, Parking-Visitor
Parking	Double Garage Attached

Interior

Interior Features	ensuite bathroom
Appliances	Dishwasher-Built-In, Dryer, Garage Control, Garage Opener, Refrigerator, Stove-Electric, Washer, Window Coverings
Heating	Forced Air-1, Natural Gas
Stories	3
Has Basement	Yes
Basement	Full, Finished

Exterior

Exterior	Wood, Metal, Vinyl
Exterior Features	Picnic Area, Playground Nearby, Schools, Shopping Nearby
Roof	Asphalt Shingles
Construction	Wood, Metal, Vinyl
Foundation	Concrete Perimeter

Additional Information

Date Listed	February 1st, 2025
Days on Market	40
Zoning	Zone 56
Condo Fee	\$189

DATA IS DEEMED RELIABLE BUT IS NOT GUARANTEED ACCURATE BY THE REALTORS® ASSOCIATION OF EDMONTON. COPYRIGHT 2025 BY THE REALTORS® ASSOCIATION OF EDMONTON. ALL RIGHTS RESERVED.Trademarks are owned or controlled by the Canadian Real Estate Association (CREA) and identify real estate professionals who are members of CREA (REALTOR®, REALTORS®) and/or the quality of services they provide (MLS®, Multiple Listing Service®)

Listing information last updated on March 13th, 2025 at 9:02am MDT