

Courtesy Of Kaitlyn A Gottlieb Of Real Broker

# \$2,395,000 - 68 54403 Rge Road 251, Rural Sturgeon County

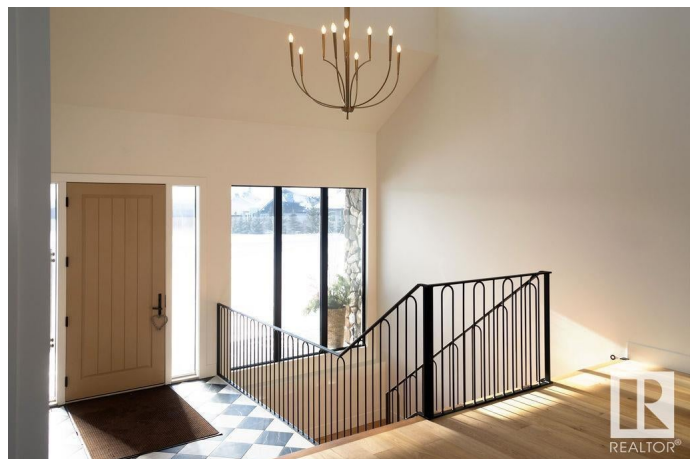
MLS® #E4420322

**\$2,395,000**

5 Bedroom, 5.50 Bathroom, 3,919 sqft  
Rural on 0.50 Acres

Pinnacle Ridge Estates, Rural Sturgeon County, AB

Experience unparalleled luxury at 68 Pinnacle Summit, a masterpiece designed by Lionsgate Builders in Sturgeon County's exclusive Pinnacle Ridge Estates. This newly completed 2024 executive raised bungalow harmonizes timeless sophistication with cutting-edge design. Nestled on a serene 0.50 acre lot in a quiet cul-de-sac, this estate boasts proximity to scenic trails, a playground, and the distinguished Sturgeon Golf Club, while being just minutes from St. Albert's vibrant amenities. Its striking stone façade, triple-glazed LUX windows, and heated covered patio with dual sliding doors set the tone for an extraordinary lifestyle. With 5 spacious bedrooms all with walk-in closets, 5.5 luxurious baths, soaring 18-foot vaulted living spaces, and gourmet appliances like a Sub-Zero fridge and 6-burner dual-fuel range. The Urban Chalet design shines through white oak cabinetry, a Renaissance Rumford wood-burning fireplace, and spa-like touches throughout. Complete with an AUD suite, gym space & Ev ready garage.



Built in 2024

## Essential Information

MLS® #	E4420322
Price	\$2,395,000
Bedrooms	5
Bathrooms	5.50
Full Baths	5
Half Baths	1
Square Footage	3,919
Acres	0.50
Year Built	2024
Type	Rural
Sub-Type	Detached Single Family
Style	Raised Bungalow
Status	Active

### **Community Information**

Address	68 54403 Rge Road 251
Area	Rural Sturgeon County
Subdivision	Pinnacle Ridge Estates
City	Rural Sturgeon County
County	ALBERTA
Province	AB
Postal Code	T5T 0B5

### **Amenities**

Features	Air Conditioner, Ceiling 10 ft., Closet Organizers, Exercise Room, Front Porch, Patio, Vaulted Ceiling, Wet Bar, HRV System, 9 ft. Basement Ceiling
----------	---

### **Interior**

Interior Features	ensuite bathroom
Heating	Forced Air-2, In Floor Heat System, Natural Gas
Fireplace	Yes
Stories	3
Has Basement	Yes
Basement	Full, Finished

### **Exterior**

Exterior	Wood
Exterior Features	Cul-De-Sac, Park/Reserve, Picnic Area, Playground Nearby, River View,

Schools, Shopping Nearby, Street Lighting

Construction Wood

Foundation Concrete Perimeter

### **Additional Information**

Date Listed February 5th, 2025

Days on Market 35

Zoning Zone 60

HOA Fees 700

HOA Fees Freq. Annually

DATA IS DEEMED RELIABLE BUT IS NOT GUARANTEED ACCURATE BY THE REALTORS® ASSOCIATION OF EDMONTON. COPYRIGHT 2025 BY THE REALTORS® ASSOCIATION OF EDMONTON. ALL RIGHTS RESERVED. Trademarks are owned or controlled by the Canadian Real Estate Association (CREA) and identify real estate professionals who are members of CREA (REALTOR®, REALTORS®) and/or the quality of services they provide (MLS®, Multiple Listing Service®)

Listing information last updated on March 12th, 2025 at 2:02pm MDT