

Courtesy Of Sunny Gill Of Exp Realty

\$489,900 - 711 89 Street, Edmonton

MLS® #E4420323

\$489,900

3 Bedroom, 2.50 Bathroom, 1,387 sqft
Single Family on 0.00 Acres

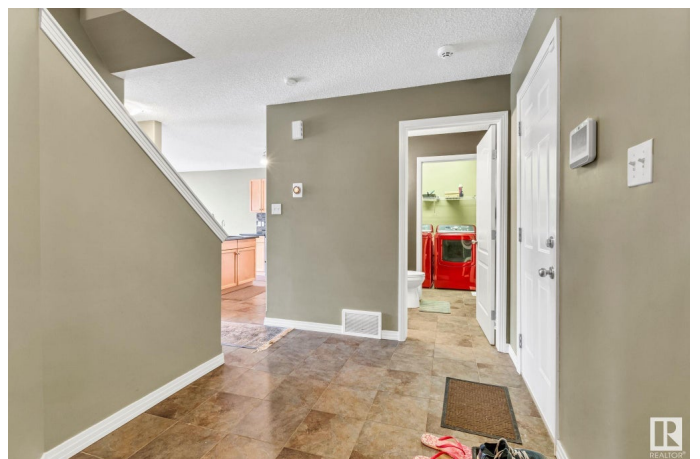
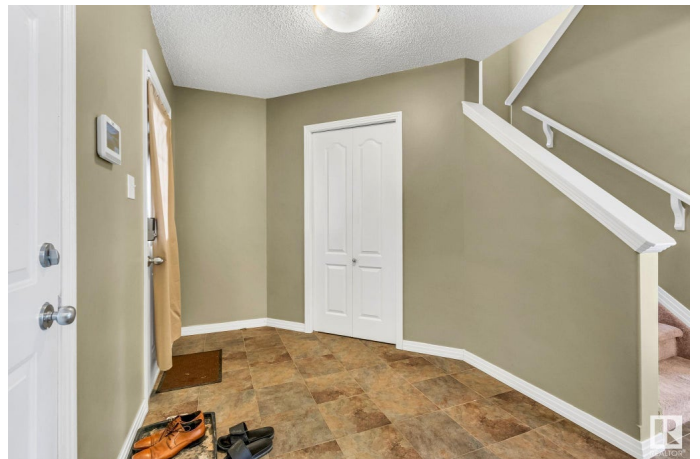
Ellerslie, Edmonton, AB

Step into this immaculate home, where charm and comfort await. Enter through a large tiled foyer that opens into a bright, open-concept great room with hardwood floors and a cozy gas fireplace. The kitchen is equipped with granite countertops and a handy corner pantry. The main floor also offers a half bath and a convenient laundry area. Upstairs, three spacious bedrooms await, including a primary suite with a walk-in closet and a full ensuite featuring a jetted tub. The partially finished basement adds a fourth bedroom—ideal for an office or extra guest space. Outside, the double attached heated garage offers wonderful storage for a mechanic or those who enjoy working on vehicles. The fully fenced backyard is perfect for entertaining, with room for family and friends. Located in a friendly, established neighborhood close to shops, schools, and parks

Built in 2002

Essential Information

MLS® #	E4420323
Price	\$489,900
Bedrooms	3
Bathrooms	2.50
Full Baths	2
Half Baths	1



Square Footage	1,387
Acres	0.00
Year Built	2002
Type	Single Family
Sub-Type	Detached Single Family
Style	2 Storey
Status	Active

Community Information

Address	711 89 Street
Area	Edmonton
Subdivision	Ellerslie
City	Edmonton
County	ALBERTA
Province	AB
Postal Code	T6X 1B9

Amenities

Amenities	Air Conditioner, Deck, No Animal Home, No Smoking Home
Parking Spaces	4
Parking	Double Garage Attached

Interior

Interior Features	ensuite bathroom
Appliances	Air Conditioning-Central, Dishwasher-Built-In, Dryer, Garage Control, Garage Opener, Microwave Hood Fan, Refrigerator, Storage Shed, Stove-Electric, Washer, Window Coverings, TV Wall Mount
Heating	Forced Air-1, Natural Gas
Fireplace	Yes
Fireplaces	Corner, Mantel, Tile Surround
Stories	2
Has Basement	Yes
Basement	Full, Partially Finished

Exterior

Exterior	Wood, Brick, Vinyl
Exterior Features	Airport Nearby, Cul-De-Sac, Fenced, Fruit Trees/Shrubs, Landscaped, Playground Nearby, Schools, Shopping Nearby
Roof	Asphalt Shingles

Construction	Wood, Brick, Vinyl
Foundation	Concrete Perimeter

School Information

Elementary	Sakwa School
Middle	kisÅªwÅªtisiwin School
High	J. Percy Page School

Additional Information

Date Listed	February 5th, 2025
Days on Market	35
Zoning	Zone 53

DATA IS DEEMED RELIABLE BUT IS NOT GUARANTEED ACCURATE BY THE REALTORS® ASSOCIATION OF EDMONTON. COPYRIGHT 2025 BY THE REALTORS® ASSOCIATION OF EDMONTON. ALL RIGHTS RESERVED. Trademarks are owned or controlled by the Canadian Real Estate Association (CREA) and identify real estate professionals who are members of CREA (REALTOR®, REALTORS®) and/or the quality of services they provide (MLS®, Multiple Listing Service®)

Listing information last updated on March 12th, 2025 at 6:17pm MDT