

Courtesy Of Lindsay Harder Of Century 21 Leading

\$739,000 - N/A, Rural Lac Ste. Anne County

MLS® #E4420551

\$739,000

4 Bedroom, 3.00 Bathroom, 1,236 sqft

Rural on 2.37 Acres

Aspen Hills (Lac Ste. Anne), Rural Lac Ste. Anne County, AB

Custom Built home! 1235 sq ft bungalow located on private treed 2.3 acre setting. Floor plan features 3 bedrooms or 2 bdrms plus den. Spacious open floor plan offering vaulted ceilings in kitchen and living room. Dark custom cabinetry in kitchen, spacious island, arborite counter tops. LG appliances are included from trail appliances. Main floor laundry. Walk in Wardrobe in Primary bedroom with 4 piece bath. Vinyl planking flooring throughout. Basement is fully finished with textured ceiling plus finished bathroom. One extra bedroom, Good sized deck off the kitchen area to private treed back yard. Oversized garage measures 26x30 is drywalled and painted. More pictures to come as the finishing is completed. New home warranty will be provided. Schools and shopping only 10 mins away in community of Onoway. Possession date could be April 15 /25.



Built in 2025

Essential Information

MLS® #	E4420551
Price	\$739,000
Bedrooms	4
Bathrooms	3.00
Full Baths	3

Square Footage 1,236
 Acres 2.37
 Year Built 2025
 Type Rural
 Sub-Type Detached Single Family
 Style Bungalow
 Status Active

Community Information

Address N/A
 Area Rural Lac Ste. Anne County
 Subdivision Aspen Hills (Lac Ste. Anne)
 City Rural Lac Ste. Anne County
 County ALBERTA
 Province AB
 Postal Code T5A 1H3

Amenities

Features Deck, No Animal Home, No S

Interior

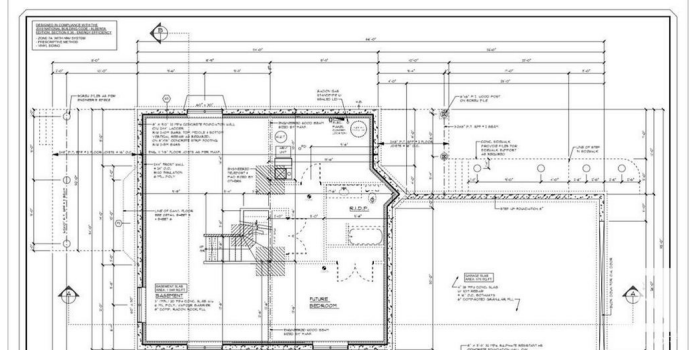
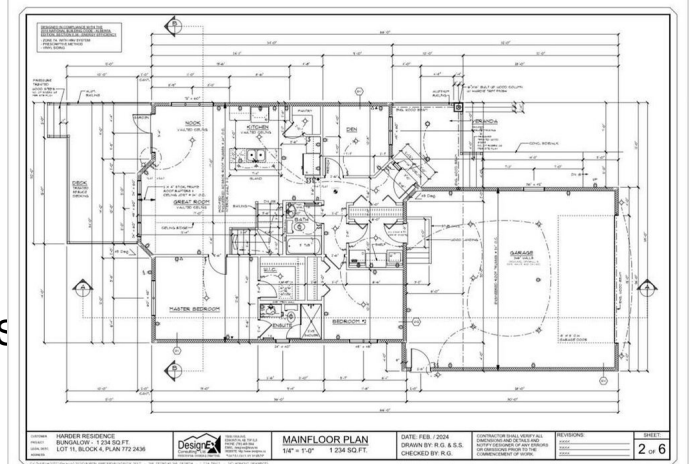
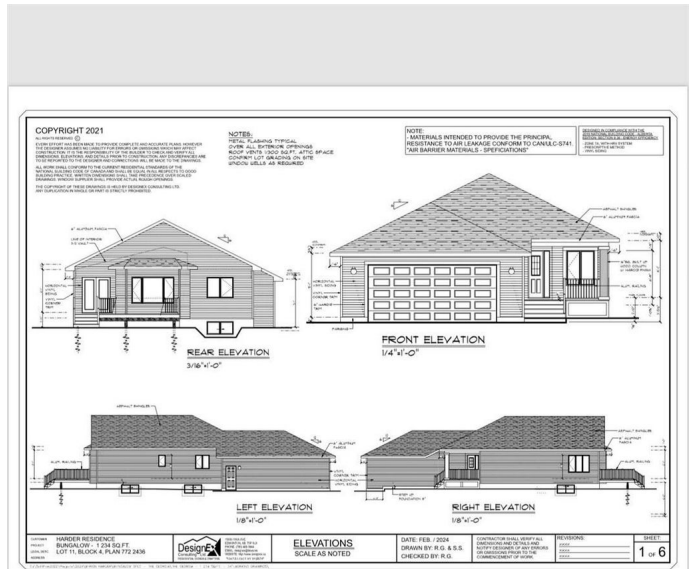
Interior Features ensuite bathroom
 Heating Forced Air-1, Natural Gas
 Stories 2
 Has Basement Yes
 Basement Full, Finished

Exterior

Exterior Wood
 Exterior Features Private Setting, Treed Lot
 Construction Wood
 Foundation Concrete Perimeter

Additional Information

Date Listed February 4th, 2025
 Days on Market 77
 Zoning Zone 70



DATA IS DEEMED RELIABLE BUT IS NOT GUARANTEED ACCURATE BY THE REALTORS® ASSOCIATION OF EDMONTON. COPYRIGHT 2025 BY THE REALTORS® ASSOCIATION OF EDMONTON. ALL RIGHTS RESERVED. Trademarks are owned or controlled by the Canadian Real Estate Association (CREA) and identify real

estate professionals who are members of CREA (REALTOR®®, REALTORS®®) and/or the quality of services they provide (MLS®®, Multiple Listing Service®®)

Listing information last updated on April 22nd, 2025 at 12:32pm MDT