

\$619,900 - 1712 168 Street, Edmonton

MLS® #E4421433

\$619,900

3 Bedroom, 2.50 Bathroom, 2,209 sqft
Single Family on 0.00 Acres

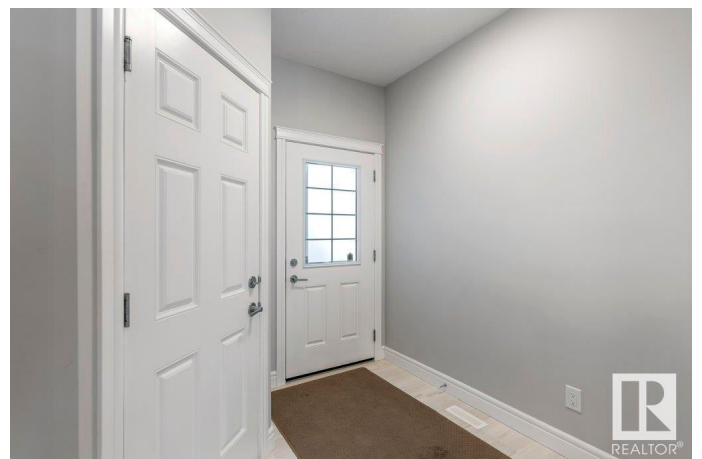
Glenridding Heights, Edmonton, AB

Welcome to your stunning upgraded home in Glenridding Heights! The bright open main floor features 9-ft ceilings, versatile den, living area with a cozy fireplace and large windows, a dining area plus a convenient built-in desk space, perfect for work or study! The chef's kitchen impresses with quartz countertops, two-tone cabinetry, high-end appliances & a walk-thru bar area to your massive pantry. Upstairs, French door entry leads you to your primary suite w/ a custom walk-in closet w/ organizers, a luxurious 5-pc ensuite oasis w/ double quartz vanity, fully tiled stand-up shower & a relaxing soaker tub. Two additional bedrooms, one with a walk-in closet, a 4-pc bath, a spacious bonus room, and convenient upper-floor laundry with quartz countertops complete the space. Stay cool with central A/C, a 20x 24 attached double garage & an unspoiled basement ready for your personal touch. Located near Currents at Windermere, top-rated schools, parks, and the Henday. A must-see!

Built in 2017

Essential Information

MLS® #	E4421433
Price	\$619,900
Bedrooms	3



Bathrooms	2.50
Full Baths	2
Half Baths	1
Square Footage	2,209
Acres	0.00
Year Built	2017
Type	Single Family
Sub-Type	Detached Single Family
Style	2 Storey
Status	Active

Community Information

Address	1712 168 Street
Area	Edmonton
Subdivision	Glenridding Heights
City	Edmonton
County	ALBERTA
Province	AB
Postal Code	T6W 3R7

Amenities

Amenities	Air Conditioner, Ceiling 9 ft., Deck, No Animal Home, No Smoking Home
Parking	Double Garage Attached

Interior

Interior Features	ensuite bathroom
Appliances	Air Conditioning-Central, Dishwasher-Built-In, Dryer, Garage Control, Garage Opener, Hood Fan, Oven-Microwave, Refrigerator, Stove-Electric, Washer, Window Coverings, Wine/Beverage Cooler
Heating	Forced Air-1, Natural Gas
Fireplace	Yes
Fireplaces	Tile Surround
Stories	2
Has Basement	Yes
Basement	Full, Unfinished

Exterior

Exterior	Wood, Stone, Vinyl
Exterior Features	Fenced, Partially Landscaped, Public Transportation, Schools, Shopping

	Nearby, See Remarks
Roof	Asphalt Shingles
Construction	Wood, Stone, Vinyl
Foundation	Concrete Perimeter

Additional Information

Date Listed	February 13th, 2025
Days on Market	49
Zoning	Zone 56

DATA IS DEEMED RELIABLE BUT IS NOT GUARANTEED ACCURATE BY THE REALTORS® ASSOCIATION OF EDMONTON. COPYRIGHT 2025 BY THE REALTORS® ASSOCIATION OF EDMONTON. ALL RIGHTS RESERVED. Trademarks are owned or controlled by the Canadian Real Estate Association (CREA) and identify real estate professionals who are members of CREA (REALTOR®, REALTORS®) and/or the quality of services they provide (MLS®, Multiple Listing Service®)

Listing information last updated on April 3rd, 2025 at 7:47pm MDT