

Courtesy Of Kimberly M LeClair Of RE/MAX River City

\$599,000 - 16627 70 Street, Edmonton

MLS® #E4421630

\$599,000

6 Bedroom, 3.50 Bathroom, 2,694 sqft
Single Family on 0.00 Acres

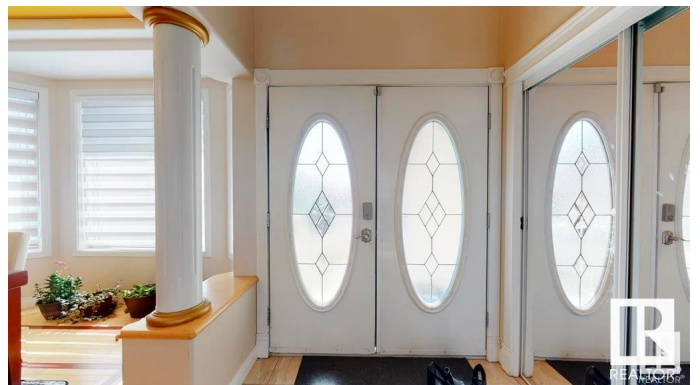
Ozerna, Edmonton, AB

Welcome to this 6 bedroom home with A/C in the beautiful neighborhood of Ozerna. This home features a formal dining room, large family room and kitchen with plenty of cabinets, 2 tiered island and corner pantry. Completing the main floor is a den, laundry area and 2 piece bathroom. Upstairs you will find 4 bedrooms with the primary having a 5 piece ensuite. Enjoy the southern exposure and light in the bonus room. Downstairs is fully finished with a second kitchen, large sitting area, 2 bedrooms, 4 piece bathroom and mechanical room. Park in the double attached garage. This home has great access to the Anthony Henday, schools, shopping and public transportation and is waiting for a family to call it home.

Built in 2005

Essential Information

| | |
|----------------|-----------|
| MLS® # | E4421630 |
| Price | \$599,000 |
| Bedrooms | 6 |
| Bathrooms | 3.50 |
| Full Baths | 3 |
| Half Baths | 1 |
| Square Footage | 2,694 |
| Acres | 0.00 |



| | |
|------------|------------------------|
| Year Built | 2005 |
| Type | Single Family |
| Sub-Type | Detached Single Family |
| Style | 2 Storey |
| Status | Active |

Community Information

| | |
|-------------|-----------------|
| Address | 16627 70 Street |
| Area | Edmonton |
| Subdivision | Ozerna |
| City | Edmonton |
| County | ALBERTA |
| Province | AB |
| Postal Code | T5Z 3J8 |

Amenities

| | |
|-----------|------------------------|
| Amenities | See Remarks |
| Parking | Double Garage Attached |

Interior

| | |
|-------------------|---------------------------|
| Interior Features | ensuite bathroom |
| Appliances | None |
| Heating | Forced Air-1, Natural Gas |
| Stories | 3 |
| Has Basement | Yes |
| Basement | Full, Finished |

Exterior

| | |
|-------------------|--|
| Exterior | Wood, Stucco |
| Exterior Features | Cul-De-Sac, Landscaped, Playground Nearby, Public Transportation, Schools, Shopping Nearby |
| Roof | Asphalt Shingles |
| Construction | Wood, Stucco |
| Foundation | Concrete Perimeter |

Additional Information

| | |
|----------------|---------------------|
| Date Listed | February 14th, 2025 |
| Days on Market | 47 |
| Zoning | Zone 28 |

Foreclosure Yes

DATA IS DEEMED RELIABLE BUT IS NOT GUARANTEED ACCURATE BY THE REALTORS® ASSOCIATION OF EDMONTON. COPYRIGHT 2025 BY THE REALTORS® ASSOCIATION OF EDMONTON. ALL RIGHTS RESERVED. Trademarks are owned or controlled by the Canadian Real Estate Association (CREA) and identify real estate professionals who are members of CREA (REALTOR®, REALTORS®) and/or the quality of services they provide (MLS®, Multiple Listing Service®)

Listing information last updated on April 2nd, 2025 at 1:17am MDT