

\$1,825,000 - Rge Rd 222 North Of Highway 16, Rural Strathcona County

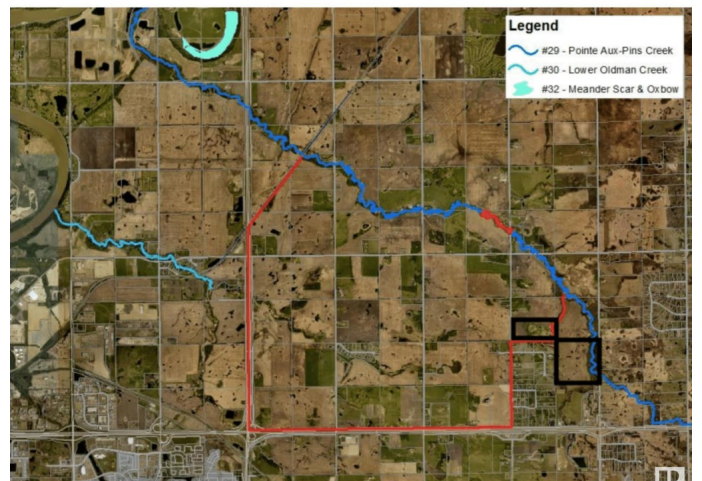
MLS® #E4421921

\$1,825,000

0 Bedroom, 0.00 Bathroom,
Rural on 160.00 Acres

None, Rural Strathcona County, AB

Great 160 Acre parcel located 0.5 mile north of Highway 16 on Range Road 222. Offers quick access to Highway 16 via the Ardrossan overpass. High dry parcel offering top quality crop land, currently rented out (approx 130 acres +/-) for \$85/acre. Some dry land east of ravine (Pointe-aux Pins Creek) as well. 100 year old spruce trees. Perfect agricultural quarter or future country residential home site. New approach just completed off RR 222. West access through North Queensdale subdivision approved by the county.



Essential Information

MLS® #	E4421921
Price	\$1,825,000
Bathrooms	0.00
Acres	160.00
Type	Rural
Sub-Type	Vacant Lot/Land
Status	Active

Community Information

Address	Rge Rd 222 North Of Highway 16
Area	Rural Strathcona County
Subdivision	None

City	Rural Strathcona County
County	ALBERTA
Province	AB
Postal Code	T8E 2L6

Exterior

Exterior Features Flat Site, Ravine View, See Remarks

Additional Information

Date Listed	February 18th, 2025
Days on Market	59
Zoning	Zone 80

DATA IS DEEMED RELIABLE BUT IS NOT GUARANTEED ACCURATE BY THE REALTORS® ASSOCIATION OF EDMONTON. COPYRIGHT 2025 BY THE REALTORS® ASSOCIATION OF EDMONTON. ALL RIGHTS RESERVED. Trademarks are owned or controlled by the Canadian Real Estate Association (CREA) and identify real estate professionals who are members of CREA (REALTOR®, REALTORS®) and/or the quality of services they provide (MLS®, Multiple Listing Service®)

Listing information last updated on April 17th, 2025 at 10:32pm MDT