

Courtesy Of Sarah L Lizee Of RE/MAX Elite

\$229,999 - 5011 Aspen Place, Leduc

MLS® #E4422548

\$229,999

3 Bedroom, 2.00 Bathroom, 1,200 sqft
Land Lease Community on 0.00 Acres

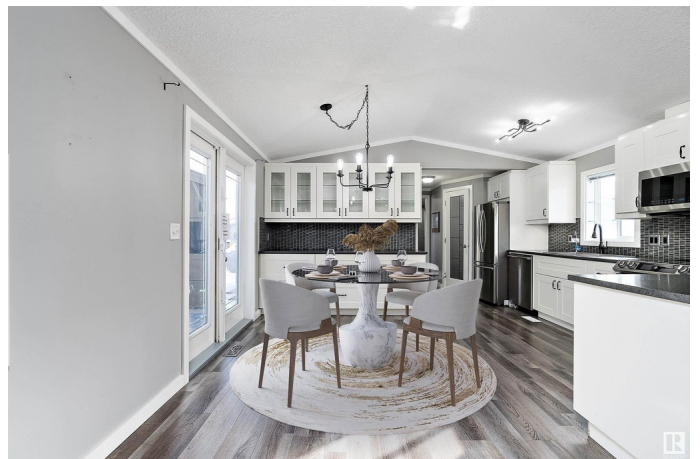
Suntree (Leduc), Leduc, AB

Beautifully upgraded home in Aspen Creek! This 3 bed, 2 bath home w/ double detached garage features open-concept living, vinyl flooring, & vaulted ceilings. The upgraded CHEF™ kitchen showcases 8 pot drawers, under-cabinet lighting, stainless steel appliances, a large pantry, ample cupboard & counter space. This home has numerous upgrades, including upgraded light fixtures, an electric fireplace in the primary suite, artificial turf, a HUGE ZERO MAINTENANCE 495 sq. ft. polyurethane deck w/ a 12x16 unattached gazebo, a fully renovated ensuite w/ an exterior door, a new furnace (2022), new eavestroughs & downspouts plus a Leaf Filter gutter system w/ heat trace, new insulation under the home, upgraded electrical, a reverse osmosis system, & a new man door on the garage. There are simply too many upgrades to list! The community itself offers a resident hall available for use at no charge. This home is in a great neighborhood, close to shopping, walking paths, & more. SOME PHOTOS VIRTUALLY STAGED.

Built in 2007

Essential Information

MLS® #	E4422548
Price	\$229,999



Bedrooms	3
Bathrooms	2.00
Full Baths	2
Square Footage	1,200
Acres	0.00
Year Built	2007
Type	Land Lease Community
Sub-Type	Detached Single Family
Style	Bungalow
Status	Active

Community Information

Address	5011 Aspen Place
Area	Leduc
Subdivision	Suntree (Leduc)
City	Leduc
County	ALBERTA
Province	AB
Postal Code	T9E 8R3

Amenities

Parking	Double Garage Detached, Insulated
---------	-----------------------------------

Interior

Interior Features	ensuite bathroom
Appliances	Air Conditioning-Central, Dishwasher-Built-In, Dryer, Garage Control, Garage Opener, Oven-Microwave, Refrigerator, Stove-Electric, Washer, Window Coverings
Heating	Forced Air-1, Natural Gas
Fireplace	Yes

Exterior

Exterior	Wood
Construction	Wood
Foundation	Piling

Additional Information

Date Listed	February 22nd, 2025
Days on Market	20

Zoning

Zone 81

DATA IS DEEMED RELIABLE BUT IS NOT GUARANTEED ACCURATE BY THE REALTORS® ASSOCIATION OF EDMONTON. COPYRIGHT 2025 BY THE REALTORS® ASSOCIATION OF EDMONTON. ALL RIGHTS RESERVED. Trademarks are owned or controlled by the Canadian Real Estate Association (CREA) and identify real estate professionals who are members of CREA (REALTOR®, REALTORS®) and/or the quality of services they provide (MLS®, Multiple Listing Service®)

Listing information last updated on March 14th, 2025 at 11:32am MDT