

\$835,000 - 6919 93 Street, Edmonton

MLS® #E4422721

\$835,000

4 Bedroom, 3.00 Bathroom, 1,374 sqft
Single Family on 0.00 Acres

Hazeldean, Edmonton, AB

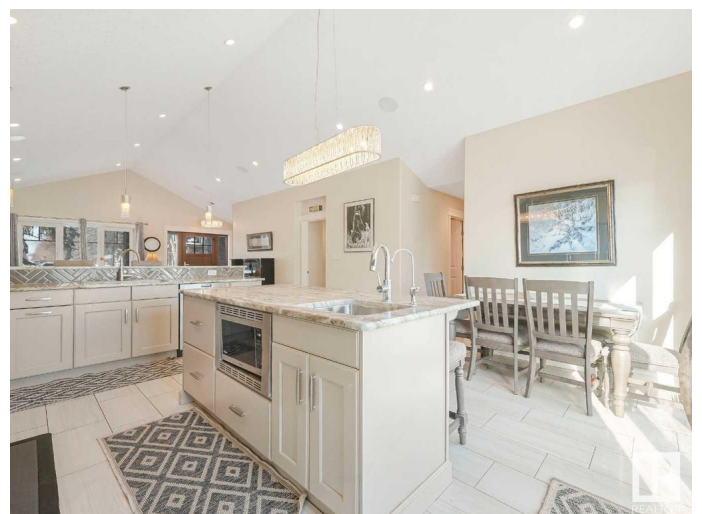
Are you a nature enthusiast looking to escape the hustle and bustle of the city? This beautifully crafted bungalow in the highly desirable neighborhood of Hazeldean may be just what you are looking for. With Mill Creek Ravine just out your back door you have access to nature trails, green spaces, scenic views, wildlife, and an off-leash dog park. The park is also connected to the greater Edmonton trail system which can take you to all the hot spots of the city. This one-of-a-kind home can operate as a 4-bedroom, 3 bathroom single family home. Or if you are looking for a little extra income you can use the basement as an independent 2-bedroom suite with a separate entrance and in suite laundry. ~ No expense was spared when constructing this home, starting with the Innotech doors and windows throughout the home which offer ultimate security for you and your family. Upon entering the home you are greeted with vaulted ceilings and large windows at the front and back allowing a beautiful flow of natural light.

Built in 2014

Essential Information

MLS® # E4422721

Price \$835,000



Bedrooms	4
Bathrooms	3.00
Full Baths	3
Square Footage	1,374
Acres	0.00
Year Built	2014
Type	Single Family
Sub-Type	Detached Single Family
Style	Bungalow
Status	Active

Community Information

Address	6919 93 Street
Area	Edmonton
Subdivision	Hazeldean
City	Edmonton
County	ALBERTA
Province	AB
Postal Code	T6E 3B7

Amenities

Amenities	Deck, Vaulted Ceiling
Parking Spaces	3
Parking	Double Garage Detached, Heated, Insulated, RV Parking

Interior

Interior Features	ensuite bathroom
Appliances	Air Conditioning-Central, Dryer, Garage Control, Garage Opener, Hood Fan, Refrigerator, Stove-Electric, Stove-Gas, Washer, Window Coverings, Dryer-Two, Washers-Two
Heating	Forced Air-1, In Floor Heat System, Natural Gas
Fireplace	Yes
Fireplaces	Wall Mount
Has Basement	Yes
Basement	Full, Finished

Exterior

Exterior	Concrete, Vinyl
Exterior Features	Backs Onto Park/Trees, Fenced, Low Maintenance Landscape,

Playground Nearby, Ravine View

Roof Asphalt Shingles
Construction Concrete, Vinyl
Foundation Concrete Perimeter

Additional Information

Date Listed February 21st, 2025
Days on Market 21
Zoning Zone 17

DATA IS DEEMED RELIABLE BUT IS NOT GUARANTEED ACCURATE BY THE REALTORS® ASSOCIATION OF EDMONTON. COPYRIGHT 2025 BY THE REALTORS® ASSOCIATION OF EDMONTON. ALL RIGHTS RESERVED. Trademarks are owned or controlled by the Canadian Real Estate Association (CREA) and identify real estate professionals who are members of CREA (REALTOR®, REALTORS®) and/or the quality of services they provide (MLS®, Multiple Listing Service®)

Listing information last updated on March 14th, 2025 at 8:17am MDT