

\$419,900 - 937 Ebbers Crescent, Edmonton

MLS® #E4423138

\$419,900

4 Bedroom, 2.50 Bathroom, 1,310 sqft
Single Family on 0.00 Acres

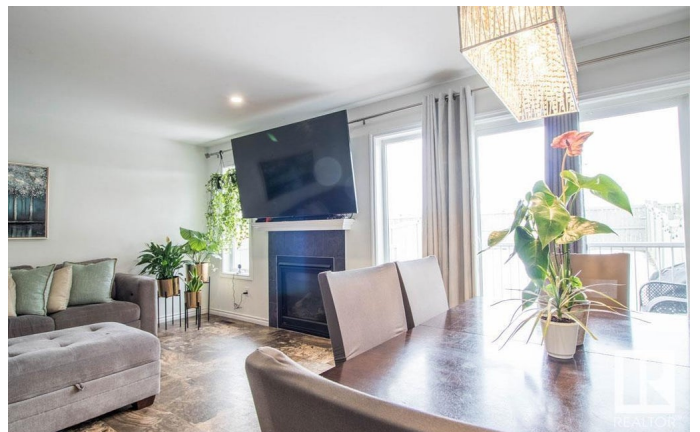
Ebbers, Edmonton, AB

DESIGNED FOR COMFORTABLE MODERN LIVING! This home features a stylish open concept design that is the perfect space for today's busy family. This half duplex (NO CONDO FEE'S) has 1309sq ft of living space plus a finished basement. The main level is open concept with a living room with gas fireplace, big bright windows, a dining area with patio doors that lead to a cute deck to enjoy summer days in the yard and a kitchen finished in warm cabinetry and stainless steel appliances plus a powder room. Upstairs you will find the spacious primary suite with full bath and walk in closet. There are two additional bedrooms down the hall and another full bath. The basement is complete with a family room area and additional room. The attached garage is drywalled and has shelving. Located in Ebbers... life is easy with lots of shopping close by and parks to enjoy! Do not miss the opportunity to make this your home!

Built in 2015

Essential Information

MLS® #	E4423138
Price	\$419,900
Bedrooms	4
Bathrooms	2.50



Full Baths	2
Half Baths	1
Square Footage	1,310
Acres	0.00
Year Built	2015
Type	Single Family
Sub-Type	Half Duplex
Style	2 Storey
Status	Active

Community Information

Address	937 Ebbers Crescent
Area	Edmonton
Subdivision	Ebbers
City	Edmonton
County	ALBERTA
Province	AB
Postal Code	T5Y 3V1

Amenities

Amenities	Deck, Detectors Smoke, Hot Water Natural Gas, No Smoking Home, Vinyl Windows
Parking Spaces	3
Parking	Insulated, Single Garage Attached

Interior

Interior Features	ensuite bathroom
Appliances	Dishwasher-Built-In, Dryer, Garage Control, Garage Opener, Hood Fan, Refrigerator, Stove-Electric, Washer
Heating	Forced Air-1, Natural Gas
Fireplace	Yes
Fireplaces	Mantel, Tile Surround
Stories	3
Has Basement	Yes
Basement	Full, Finished

Exterior

Exterior	Wood, Stone, Vinyl
Exterior Features	Fenced, Landscaped, Playground Nearby, Public Swimming Pool, Public

	Transportation, Schools, Shopping Nearby
Roof	Asphalt Shingles
Construction	Wood, Stone, Vinyl
Foundation	Concrete Perimeter

Additional Information

Date Listed	February 27th, 2025
Days on Market	15
Zoning	Zone 02

DATA IS DEEMED RELIABLE BUT IS NOT GUARANTEED ACCURATE BY THE REALTORS® ASSOCIATION OF EDMONTON. COPYRIGHT 2025 BY THE REALTORS® ASSOCIATION OF EDMONTON. ALL RIGHTS RESERVED. Trademarks are owned or controlled by the Canadian Real Estate Association (CREA) and identify real estate professionals who are members of CREA (REALTOR®, REALTORS®) and/or the quality of services they provide (MLS®, Multiple Listing Service®)

Listing information last updated on March 14th, 2025 at 4:47am MDT