

\$145,000 - 6009 Twp 534, Rural Parkland County

MLS® #E4423379

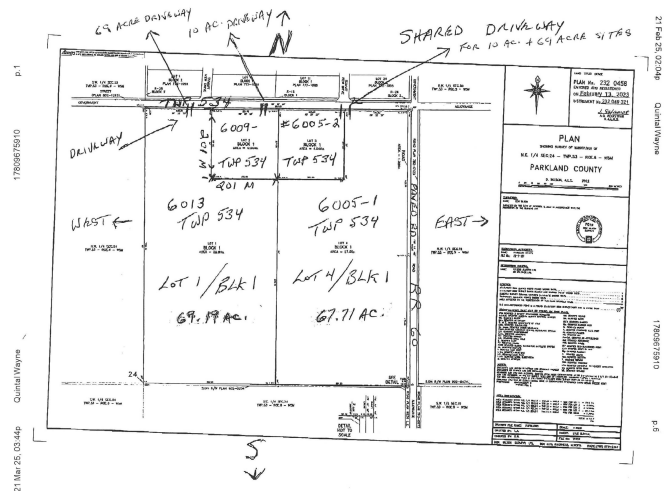
\$145,000

0 Bedroom, 0.00 Bathroom,

Rural on 9.98 Acres

None, Rural Parkland County, AB

Developers Dream! So many possibilities for this mostly treed 9.98 Acre parcel. Located 4 kms North of Seba Beach, this property is the perfect spot for those looking for a quiet retreat with investment potential. Is a fantastic spot to build your dream home or cabin So many recreational opportunities exist here â€“quadding, snowmobiling, or fishing on Wabamun or Lake Isle. Properties like this do not come along often!**BULK PURCHASE WILL BE CONSIDERED FOR ALL FOUR LAND/TITLES AT A LOWER PRICE**



Essential Information

MLS® #	E4423379
Price	\$145,000
Bathrooms	0.00
Acres	9.98
Type	Rural
Sub-Type	Vacant Lot/Land
Status	Active

Community Information

Address	6009 Twp 534
Area	Rural Parkland County
Subdivision	None
City	Rural Parkland County
County	ALBERTA

Province AB
Postal Code T0E 2B0

Exterior

Exterior Features Private Setting, Recreation Use, See Remarks

Additional Information

Date Listed February 28th, 2025
Days on Market 34
Zoning Zone 70

DATA IS DEEMED RELIABLE BUT IS NOT GUARANTEED ACCURATE BY THE REALTORS® ASSOCIATION OF EDMONTON. COPYRIGHT 2025 BY THE REALTORS® ASSOCIATION OF EDMONTON. ALL RIGHTS RESERVED. Trademarks are owned or controlled by the Canadian Real Estate Association (CREA) and identify real estate professionals who are members of CREA (REALTOR®, REALTORS®) and/or the quality of services they provide (MLS®, Multiple Listing Service®)

Listing information last updated on April 3rd, 2025 at 9:17pm MDT