

## \$425,000 - 5280 Highway 627, Rural Parkland County

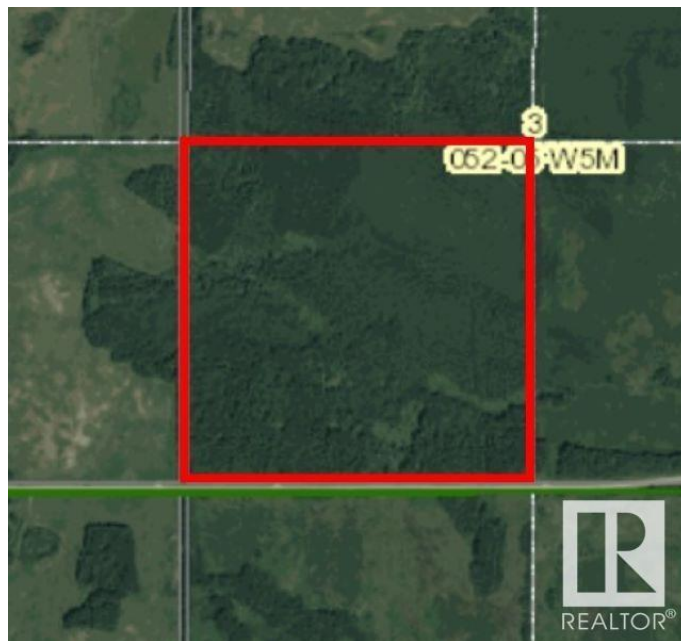
MLS® #E4423622

**\$425,000**

0 Bedroom, 0.00 Bathroom,  
Rural on 154.77 Acres

None, Rural Parkland County, AB

Less than an hour west of Edmonton, south of Lake Wabamun. Beautiful treed quarter section with easy access off Highway 627. Your very own recreational escape or a place to build a secluded homestead.



### Essential Information

MLS® #	E4423622
Price	\$425,000
Bathrooms	0.00
Acres	154.77
Type	Rural
Sub-Type	Vacant Lot/Land
Status	Active

### Community Information

Address	5280 Highway 627
Area	Rural Parkland County
Subdivision	None
City	Rural Parkland County
County	ALBERTA
Province	AB
Postal Code	T0E 2H0

### Exterior

Exterior Features Treed Lot, Partially Fenced

### Additional Information



Date Listed	February 28th, 2025
Days on Market	34
Zoning	Zone 90

DATA IS DEEMED RELIABLE BUT IS NOT GUARANTEED ACCURATE BY THE REALTORS® ASSOCIATION OF EDMONTON. COPYRIGHT 2025 BY THE REALTORS® ASSOCIATION OF EDMONTON. ALL RIGHTS RESERVED. Trademarks are owned or controlled by the Canadian Real Estate Association (CREA) and identify real estate professionals who are members of CREA (REALTOR®, REALTORS®) and/or the quality of services they provide (MLS®, Multiple Listing Service®)

Listing information last updated on April 3rd, 2025 at 7:02pm MDT