

\$438,000 - 13110 139 Street, Edmonton

MLS® #E4424032

\$438,000

3 Bedroom, 2.00 Bathroom, 1,029 sqft
Single Family on 0.00 Acres

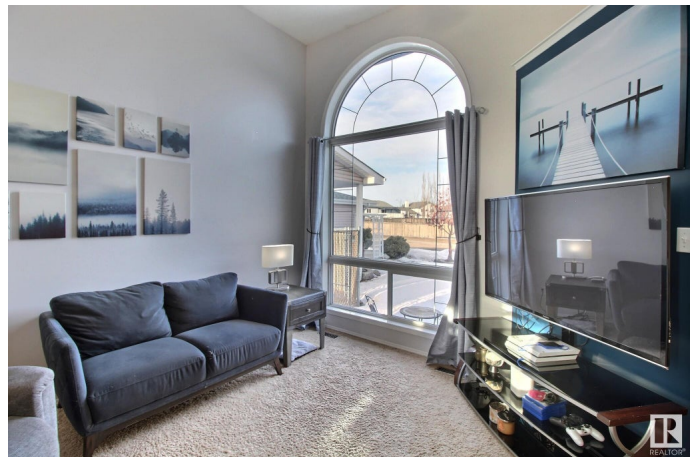
Athlone, Edmonton, AB

This fully finished home features a ton of upgrades. The main floor is home to the living room, with vaulted ceilings and a ton of natural light. On the upper level you'll find the dining room and large kitchen, complete with stainless appliances and a centre island. Down the hall is the primary suite, with a "cheater door" to the main bathroom, there is one more bedroom upstairs. The basement features a large family room with a ton of natural light from the open to above windows. The basement is also home to a third bedroom, another full bath, laundry and a large crawlspace for storage. Recent upgrades include: basement bathroom ('25), furnace ('24), HWT ('24), central AC ('22), roof ('22). The garage is oversized and heated! The backyard features a fire pit, large composite deck and a natural gas connection for your BBQ. This home is a MUST SEE!

Built in 1999

Essential Information

MLS® #	E4424032
Price	\$438,000
Bedrooms	3
Bathrooms	2.00
Full Baths	2
Square Footage	1,029



Acres	0.00
Year Built	1999
Type	Single Family
Sub-Type	Detached Single Family
Style	Bi-Level
Status	Active

Community Information

Address	13110 139 Street
Area	Edmonton
Subdivision	Athlone
City	Edmonton
County	ALBERTA
Province	AB
Postal Code	T5L 5A6

Amenities

Amenities	Air Conditioner, Crawl Space, Deck, Fire Pit, Vaulted Ceiling, Vinyl Windows, Natural Gas BBQ Hookup
Parking	Double Garage Attached, Heated, Over Sized

Interior

Appliances	Air Conditioning-Central, Dishwasher-Built-In, Dryer, Garage Control, Garage Opener, Microwave Hood Fan, Refrigerator, Stove-Electric, Washer
Heating	Forced Air-1, Natural Gas
Stories	3
Has Basement	Yes
Basement	Full, Finished

Exterior

Exterior	Wood, Vinyl
Exterior Features	Fenced, Landscaped, Playground Nearby, Public Transportation, Schools
Roof	Asphalt Shingles
Construction	Wood, Vinyl
Foundation	Concrete Perimeter

Additional Information

Date Listed	March 5th, 2025
-------------	-----------------

Days on Market 8

Zoning Zone 01

DATA IS DEEMED RELIABLE BUT IS NOT GUARANTEED ACCURATE BY THE REALTORS® ASSOCIATION OF EDMONTON. COPYRIGHT 2025 BY THE REALTORS® ASSOCIATION OF EDMONTON. ALL RIGHTS RESERVED. Trademarks are owned or controlled by the Canadian Real Estate Association (CREA) and identify real estate professionals who are members of CREA (REALTOR®, REALTORS®) and/or the quality of services they provide (MLS®, Multiple Listing Service®)

Listing information last updated on March 13th, 2025 at 9:32am MDT