

Courtesy Of Sarah J Leib Of RE/MAX River City

\$439,900 - 1380 Keswick Drive, Edmonton

MLS® #E4424800

\$439,900

3 Bedroom, 2.50 Bathroom, 1,514 sqft
Single Family on 0.00 Acres

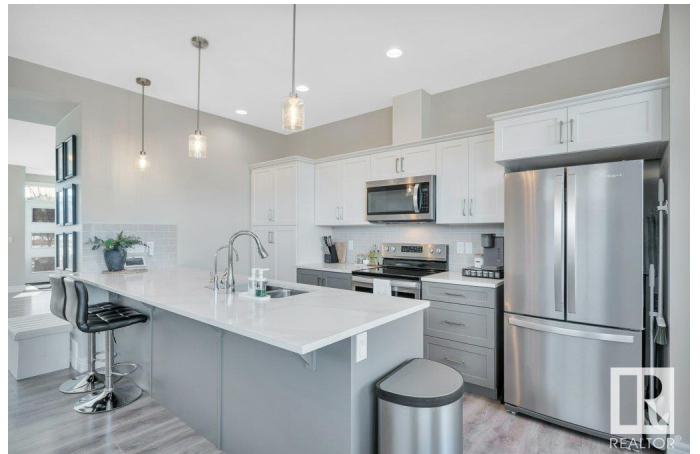
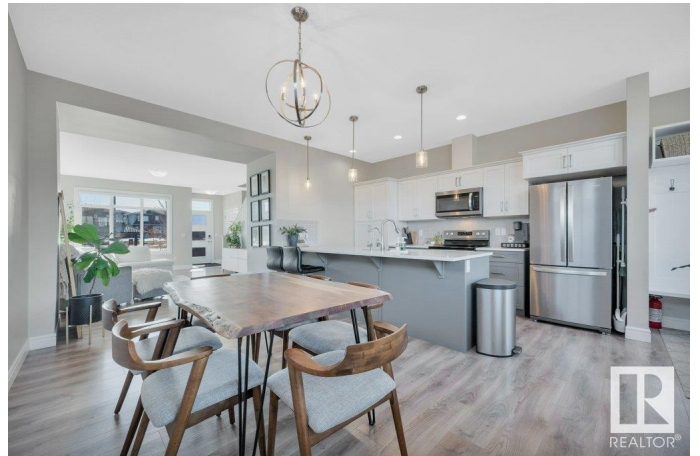
Keswick Area, Edmonton, AB

KEEN ON KESWICK! Move in ready, 3 Bedroom, 3 Bath, END UNIT now available. Home features WHITE & GREY KITCHEN CABINETS, QUARTZ COUNTERTOPS & Stainless Steel Appliances. Main floor is carpet-free. Upstairs, the Primary Bedroom fits a king-size bed + Walk-In Closet & 4-piece Ensuite. Two additional Bedrooms & a Flex space are found on this level. Plenty of windows throughout make for a BRIGHT & SUNNY house all year. Double Car Garage completes the property. Bonus Features: 9' Ceilings, Water Filtration System & UPPER FLOOR LAUNDRY. Unfinished basement includes a rough-in bath & window for future development. Located across the street from Park & Playground w/ the pond & walking trails down the block. Conveniently located near shopping, restaurants, schools, transit, Heday & the Airport. **NO CONDO FEES!**

Built in 2020

Essential Information

MLS® #	E4424800
Price	\$439,900
Bedrooms	3
Bathrooms	2.50
Full Baths	2
Half Baths	1



Square Footage	1,514
Acres	0.00
Year Built	2020
Type	Single Family
Sub-Type	Residential Attached
Style	2 Storey
Status	Active

Community Information

Address	1380 Keswick Drive
Area	Edmonton
Subdivision	Keswick Area
City	Edmonton
County	ALBERTA
Province	AB
Postal Code	T6W 4T9

Amenities

Amenities	Ceiling 9 ft., No Animal Home, No Smoking Home
Parking	Double Garage Detached

Interior

Interior Features	ensuite bathroom
Appliances	Dishwasher-Built-In, Dryer, Garage Control, Garage Opener, Microwave Hood Fan, Refrigerator, Stove-Electric, Washer
Heating	Forced Air-1, Natural Gas
Stories	2
Has Basement	Yes
Basement	Full, Unfinished

Exterior

Exterior	Wood, Stone, Vinyl
Exterior Features	Airport Nearby, Back Lane, Corner Lot, Landscaped, Park/Reserve, Playground Nearby, Public Transportation, Schools, Shopping Nearby
Roof	Asphalt Shingles
Construction	Wood, Stone, Vinyl
Foundation	Concrete Perimeter

School Information

Elementary	Joey Moss / Joan Carr
Middle	Joey Moss / Joan Carr
High	Harry Ainlay School

Additional Information

Date Listed March 8th, 2025

Days on Market 6

Zoning Zone 56

DATA IS DEEMED RELIABLE BUT IS NOT GUARANTEED ACCURATE BY THE REALTORS® ASSOCIATION OF EDMONTON. COPYRIGHT 2025 BY THE REALTORS® ASSOCIATION OF EDMONTON. ALL RIGHTS RESERVED. Trademarks are owned or controlled by the Canadian Real Estate Association (CREA) and identify real estate professionals who are members of CREA (REALTOR®, REALTORS®) and/or the quality of services they provide (MLS®, Multiple Listing Service®)

Listing information last updated on March 14th, 2025 at 4:32am MDT