

Courtesy Of Fan Yang and Haijun Yan Of Mozaic Realty Group

\$389,900 - 627 5151 Windermere Boulevard, Edmonton

MLS® #E4425217

\$389,900

2 Bedroom, 2.00 Bathroom, 1,015 sqft
Condo / Townhouse on 0.00 Acres

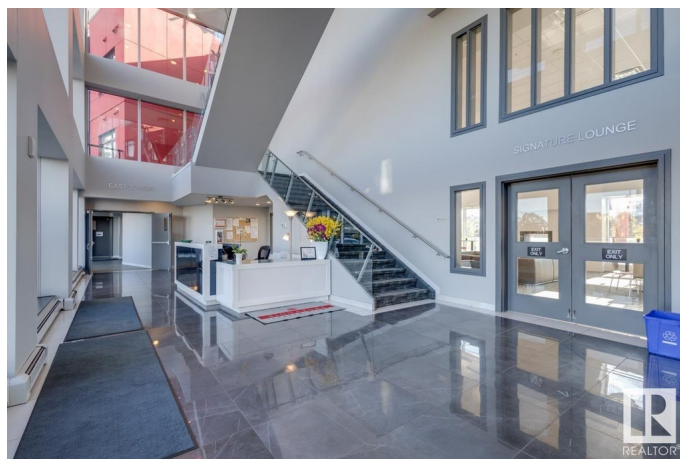
Ambleside, Edmonton, AB

Welcome to the Signature at Ambleside - concrete high-rise building with stunning architectural structure and premium upscale living style! This well-kept CORNER UNIT boasts 1,000+ sqft, TWO bedrooms plus DEN, 2 full baths and an incredible 12'X30' outdoor balcony. Modern open concept design w/ hardwood floors & tile throughout. Large windows allow natural light to flood in throughout the whole unit. Gourmet kitchen boasts stainless steel appliances, granite ctps, and full height cabinets. The Primary suite has a huge W/T closet that flows through to the 3 pc ensuite. The second bedroom is also a good-size w/ south exposure. The HUGE CORNER patio is perfect for summer entertaining. This unit also comes with ONE titled underground parking. Great amenities include CONCIERGE SERVICE, EXERCISE CENTRE & OUTDOOR TERRACE with water feature.

Built in 2014

Essential Information

MLS® #	E4425217
Price	\$389,900
Bedrooms	2
Bathrooms	2.00
Full Baths	2



Square Footage	1,015
Acres	0.00
Year Built	2014
Type	Condo / Townhouse
Sub-Type	Apartment High Rise
Style	Single Level Apartment
Status	Active

Community Information

Address	627 5151 Windermere Boulevard
Area	Edmonton
Subdivision	Ambleside
City	Edmonton
County	ALBERTA
Province	AB
Postal Code	T6W 2K4

Amenities

Amenities	Air Conditioner, Ceiling 9 ft., Deck, Detectors Smoke, Parking-Visitor, Patio, Vinyl Windows, Rooftop Deck/Patio
Parking	Parkade, Underground

Interior

Interior Features	ensuite bathroom
Appliances	Dishwasher-Built-In, Dryer, Microwave Hood Fan, Refrigerator, Stove-Electric, Washer
Heating	Heat Pump, Natural Gas
# of Stories	12
Stories	1
Has Basement	Yes
Basement	None, No Basement

Exterior

Exterior	Concrete, Stucco
Exterior Features	Playground Nearby, Schools, Shopping Nearby
Roof	EPDM Membrane
Construction	Concrete, Stucco
Foundation	Concrete Perimeter

School Information

Elementary	Dr. Margaret-Ann Armour
Middle	Dr. Margaret-Ann Armour
High	Lillian Osborne School

Additional Information

Date Listed	March 12th, 2025
Days on Market	3
Zoning	Zone 56
Condo Fee	\$570

DATA IS DEEMED RELIABLE BUT IS NOT GUARANTEED ACCURATE BY THE REALTORS® ASSOCIATION OF EDMONTON. COPYRIGHT 2025 BY THE REALTORS® ASSOCIATION OF EDMONTON. ALL RIGHTS RESERVED. Trademarks are owned or controlled by the Canadian Real Estate Association (CREA) and identify real estate professionals who are members of CREA (REALTOR®, REALTORS®) and/or the quality of services they provide (MLS®, Multiple Listing Service®)

Listing information last updated on March 14th, 2025 at 9:47pm MDT