

Courtesy Of Kira Harrington Of Real Broker

## \$739,900 - 6155 Maynard Crescent, Edmonton

MLS® #E4425259

**\$739,900**

6 Bedroom, 3.50 Bathroom, 2,458 sqft  
Single Family on 0.00 Acres

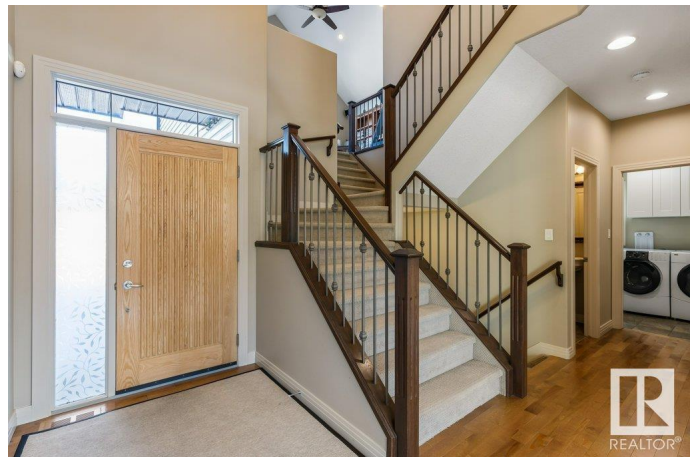
MacTaggart, Edmonton, AB

MAGNIFICENT IN MACTAGGART! This ORIGINAL OWNER has been lovingly cared for. HIGH QUALITY built by MANAGEN w/ over 3500sqft of living space. Total of 6 beds & 3.5 baths, this is the perfect family home. Main floor feat. GLEAMING HARDWOOD, 9ft & HUGE WINDOWS! Main floor den, large living room w/ cozy fp. GOURMET KITCHEN w/ GRANITE, upgraded cherry cabinetry w/ custom pullouts, Bosch dishwasher, large pantry. Open to extra large dining area w/ lovely views of the yard! Upstairs has massive Bonus room w/ SOARING CEILINGS. 3 generous bedrooms incl. primary retreat w/ SPA LIKE ENSUITE. Fully finished bsmt w/ rec. room 3 more beds, full bath w/ heated floors & loads of storage. SPECTACULAR YARD w/ mature trees, stamped concrete patio & irrigation. Oversized garage w/ hot/cold taps, drain, epoxy floors & 220V. SO MANY upgrades incl: A/C, hunter douglas blinds, high eff. Furnace & HWT. Perfectly located close to TOP SCHOOLS, trails, shopping, REC. Centre, & easy access to DT, airport. THIS ONE IS A MUST SEE!

Built in 2007

### Essential Information

|        |           |
|--------|-----------|
| MLS® # | E4425259  |
| Price  | \$739,900 |



|                |                        |
|----------------|------------------------|
| Bedrooms       | 6                      |
| Bathrooms      | 3.50                   |
| Full Baths     | 3                      |
| Half Baths     | 1                      |
| Square Footage | 2,458                  |
| Acres          | 0.00                   |
| Year Built     | 2007                   |
| Type           | Single Family          |
| Sub-Type       | Detached Single Family |
| Style          | 2 Storey               |
| Status         | Active                 |

### **Community Information**

|             |                       |
|-------------|-----------------------|
| Address     | 6155 Maynard Crescent |
| Area        | Edmonton              |
| Subdivision | MacTaggart            |
| City        | Edmonton              |
| County      | ALBERTA               |
| Province    | AB                    |
| Postal Code | T6R 0H8               |

### **Amenities**

|                |                                                                                     |
|----------------|-------------------------------------------------------------------------------------|
| Amenities      | Air Conditioner, Ceiling 9 ft., Closet Organizers, Detectors Smoke, No Smoking Home |
| Parking Spaces | 4                                                                                   |
| Parking        | Double Garage Attached                                                              |

### **Interior**

|                   |                                                                                                                                                                                                                                   |
|-------------------|-----------------------------------------------------------------------------------------------------------------------------------------------------------------------------------------------------------------------------------|
| Interior Features | ensuite bathroom                                                                                                                                                                                                                  |
| Appliances        | Air Conditioning-Central, Dishwasher-Built-In, Dryer, Garage Control, Garage Opener, Garburator, Microwave Hood Fan, Refrigerator, Stove-Countertop Electric, Vacuum System Attachments, Vacuum Systems, Washer, Window Coverings |
| Heating           | Forced Air-1, Natural Gas                                                                                                                                                                                                         |
| Fireplace         | Yes                                                                                                                                                                                                                               |
| Fireplaces        | Mantel                                                                                                                                                                                                                            |
| Stories           | 3                                                                                                                                                                                                                                 |
| Has Basement      | Yes                                                                                                                                                                                                                               |
| Basement          | Full, Finished                                                                                                                                                                                                                    |

## Exterior

|                   |                                                                                                                                          |
|-------------------|------------------------------------------------------------------------------------------------------------------------------------------|
| Exterior          | Wood, Stone, Vinyl                                                                                                                       |
| Exterior Features | Fenced, Flat Site, Golf Nearby, Landscaped, Level Land, No Back Lane, Playground Nearby, Public Transportation, Schools, Shopping Nearby |
| Roof              | Asphalt Shingles                                                                                                                         |
| Construction      | Wood, Stone, Vinyl                                                                                                                       |
| Foundation        | Concrete Perimeter                                                                                                                       |

## School Information

|            |                        |
|------------|------------------------|
| Elementary | Nellie Carlson School  |
| Middle     | Esther Starkman School |
| High       | Lillian Osborne School |

## Additional Information

|                |                  |
|----------------|------------------|
| Date Listed    | March 12th, 2025 |
| Days on Market | 2                |
| Zoning         | Zone 14          |

DATA IS DEEMED RELIABLE BUT IS NOT GUARANTEED ACCURATE BY THE REALTORS® ASSOCIATION OF EDMONTON. COPYRIGHT 2025 BY THE REALTORS® ASSOCIATION OF EDMONTON. ALL RIGHTS RESERVED. Trademarks are owned or controlled by the Canadian Real Estate Association (CREA) and identify real estate professionals who are members of CREA (REALTOR®, REALTORS®) and/or the quality of services they provide (MLS®, Multiple Listing Service®)

Listing information last updated on March 14th, 2025 at 7:02am MDT