

Courtesy Of Brent Anderson Of Century 21 Masters

\$149,000 - 320 2508 50 Street, Edmonton

MLS® #E4425427

\$149,000

1 Bedroom, 1.00 Bathroom, 670 sqft
Condo / Townhouse on 0.00 Acres

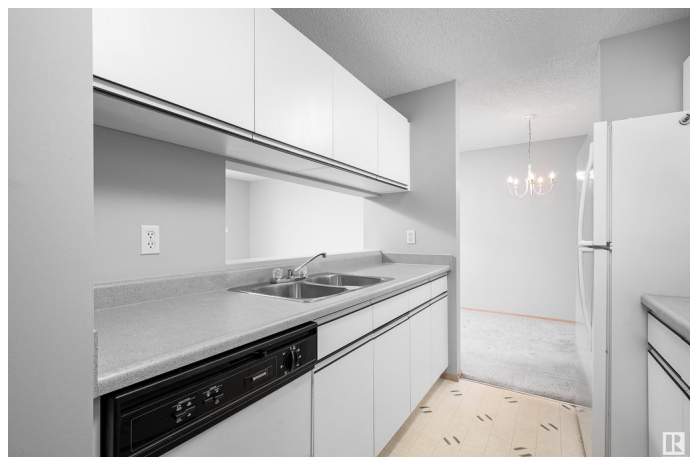
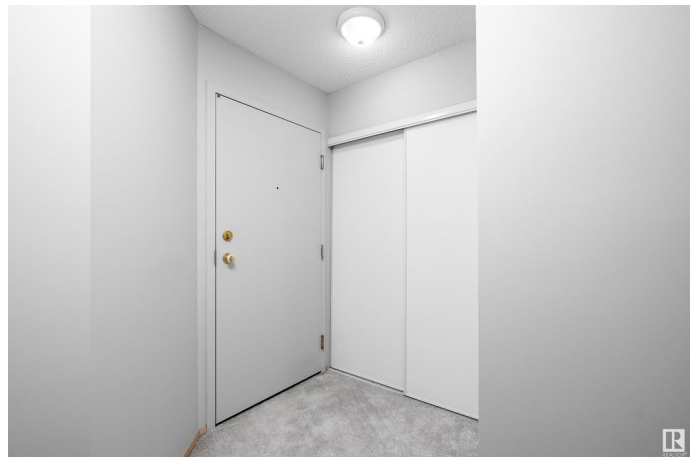
Mill Woods Town Centre, Edmonton, AB

Welcome to an immaculately kept one-bdrm, one-bthrm condo that is truly move-in ready. This sparkling clean unit, featuring fresh paint throughout, professionally cleaned carpets, brand new stove. Cook up a storm in your fully-equipped kitchen, perfect for culinary enthusiasts. Benefit from spacious closets in both the entryway + bedroom, providing plenty of room for all your belongings. The condo is flooded with natural light, creating a bright + inviting atmosphere. Situated within walking distance to shopping centres, restaurants, + public transportation. Enjoy the peace + privacy of a corner unit with no floors above. The unit includes one assigned parking stall. Whether you're a first-time homebuyer, a parent looking for a safe place for your child, or an investor seeking a promising property, this unit offers everything you need. With its excellent location, modern amenities, + appealing features, you truly can't go wrong. See for yourself the potential this condo holds!

Built in 1993

Essential Information

MLS® #	E4425427
Price	\$149,000
Bedrooms	1
Bathrooms	1.00



Full Baths	1
Square Footage	670
Acres	0.00
Year Built	1993
Type	Condo / Townhouse
Sub-Type	Lowrise Apartment
Style	Single Level Apartment
Status	Active

Community Information

Address	320 2508 50 Street
Area	Edmonton
Subdivision	Mill Woods Town Centre
City	Edmonton
County	ALBERTA
Province	AB
Postal Code	T6L 6X9

Amenities

Amenities	No Animal Home, No Smoking Home, Parking-Visitor
Parking	Stall

Interior

Appliances	Dishwasher-Built-In, Dryer, Refrigerator, Stove-Electric, Washer
Heating	Baseboard, Hot Water, Natural Gas
# of Stories	4
Stories	1
Has Basement	Yes
Basement	None, No Basement

Exterior

Exterior	Wood, Stucco
Exterior Features	Airport Nearby, Fenced, No Through Road, Playground Nearby, Public Transportation, Schools, Shopping Nearby
Roof	Asphalt Shingles
Construction	Wood, Stucco
Foundation	Concrete Perimeter

School Information

Elementary	Weinlos School
Middle	Kate Chegwin School
High	W.P. Wagner School

Additional Information

Date Listed	March 13th, 2025
Days on Market	28
Zoning	Zone 29
Condo Fee	\$343

DATA IS DEEMED RELIABLE BUT IS NOT GUARANTEED ACCURATE BY THE REALTORS® ASSOCIATION OF EDMONTON. COPYRIGHT 2025 BY THE REALTORS® ASSOCIATION OF EDMONTON. ALL RIGHTS RESERVED. Trademarks are owned or controlled by the Canadian Real Estate Association (CREA) and identify real estate professionals who are members of CREA (REALTOR®, REALTORS®) and/or the quality of services they provide (MLS®, Multiple Listing Service®)

Listing information last updated on April 10th, 2025 at 10:02am MDT