

\$435,000 - 15312 90 Avenue, Edmonton

MLS® #E4425545

\$435,000

4 Bedroom, 3.50 Bathroom, 1,368 sqft
Condo / Townhouse on 0.00 Acres

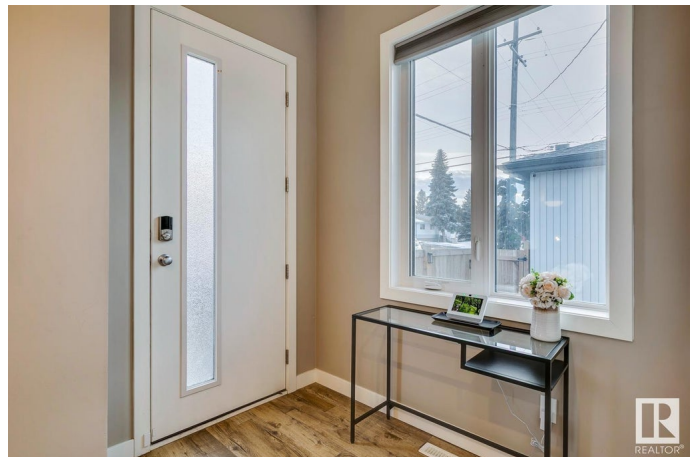
Jasper Park, Edmonton, AB

Welcome to this beautiful, well-maintained, townhouse in the desirable West Jasper neighbourhood of Edmonton. Built in 2019, this spacious home offers a perfect blend of contemporary style and comfort with airy 9ft ceilings throughout. The main level features an open, inviting layout with modern finishes, including high-quality flooring, sleek cabinetry, and stainless steel appliances. Upstairs, you'll find three generously sized bedrooms, each with plenty of natural light, stacked laundry and an ample amount of storage. The fully finished basement provides even more versatility, with an additional bedroom, 4pc bathroom, secondary laundry rough-ins and separate side entry, making this an ideal investment property. The backyard features a private hot tub, fenced yard and direct access to the garage. Located in the quiet, family-friendly West Jasper area, this home is just minutes away from parks, shopping, WEM, schools, and major routes, offering convenience and a great lifestyle. Welcome home!

Built in 2019

Essential Information

MLS® #	E4425545
Price	\$435,000



Bedrooms	4
Bathrooms	3.50
Full Baths	3
Half Baths	1
Square Footage	1,368
Acres	0.00
Year Built	2019
Type	Condo / Townhouse
Sub-Type	Townhouse
Style	2 Storey
Status	Active

Community Information

Address	15312 90 Avenue
Area	Edmonton
Subdivision	Jasper Park
City	Edmonton
County	ALBERTA
Province	AB
Postal Code	T5R 4W2

Amenities

Amenities	Carbon Monoxide Detectors, Ceiling 9 ft., Deck, Detectors Smoke, Hot Tub, No Smoking Home
Parking	Single Garage Detached

Interior

Interior Features	ensuite bathroom
Appliances	Air Conditioning-Central, Dishwasher-Built-In, Dryer, Garage Control, Garage Opener, Hood Fan, Refrigerator, Stove-Electric, Washer, Curtains and Blinds, Hot Tub
Heating	Forced Air-1, Natural Gas
Stories	3
Has Basement	Yes
Basement	Full, Finished

Exterior

Exterior	Wood, Stucco, Vinyl
Exterior Features	Fenced, Landscaped, Playground Nearby, Public Transportation,

Schools, Shopping Nearby

Roof Asphalt Shingles
Construction Wood, Stucco, Vinyl
Foundation Concrete Perimeter

School Information

Elementary Meadowlark School
Middle Parkview School
High Jasper Place School

Additional Information

Date Listed March 13th, 2025
Days on Market 1
Zoning Zone 22
Condo Fee \$100

DATA IS DEEMED RELIABLE BUT IS NOT GUARANTEED ACCURATE BY THE REALTORS® ASSOCIATION OF EDMONTON. COPYRIGHT 2025 BY THE REALTORS® ASSOCIATION OF EDMONTON. ALL RIGHTS RESERVED. Trademarks are owned or controlled by the Canadian Real Estate Association (CREA) and identify real estate professionals who are members of CREA (REALTOR®, REALTORS®) and/or the quality of services they provide (MLS®, Multiple Listing Service®)

Listing information last updated on March 14th, 2025 at 11:47am MDT