

\$565,000 - 136c 8 Street, Rural Parkland County

MLS® #E4426122

\$565,000

3 Bedroom, 2.00 Bathroom, 1,877 sqft
Rural on 0.16 Acres

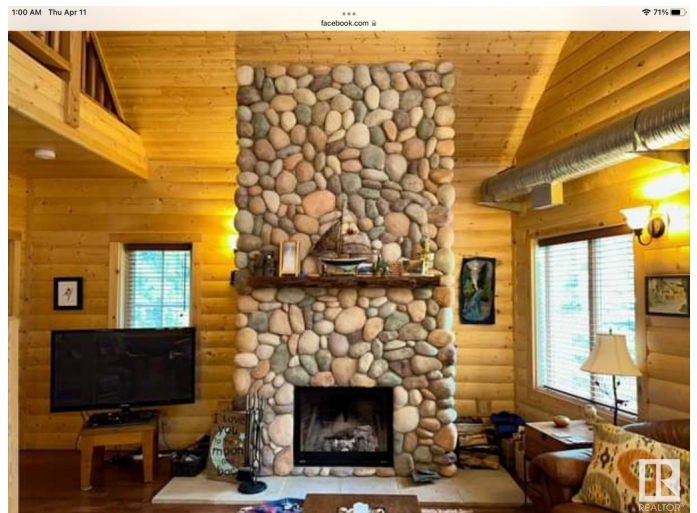
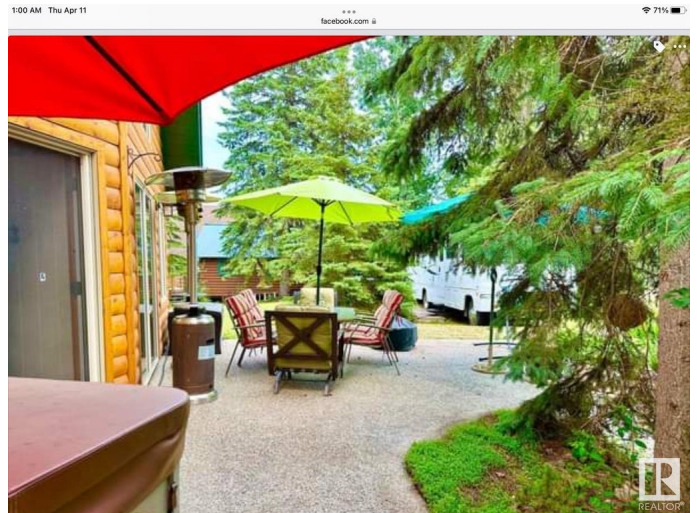
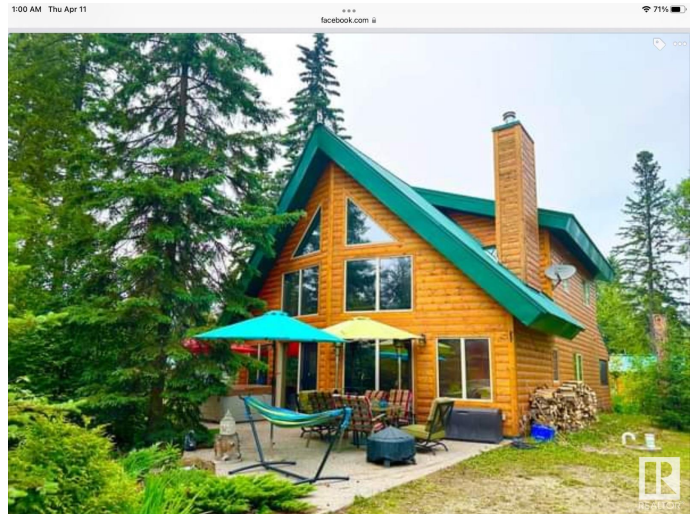
Seba Beach, Rural Parkland County, AB

2012 BEAUTIFUL ALL SEASON CABIN AT SEBA BEACH! Located 45 minutes west of Edmonton in the highly sought after LAKE WABAMUN summer village of Seba Beach. Modern log style cabin (2012) set on serene treed lot. Approximately 1877 sqft majestic interior including the loft. Cabin built on 12' x 12' - 15' ft wall piles concrete slab ~ 6" centers Total 3 bedrooms (including main floor master bedroom with ensuite and walk in closet), (2 bedroom in the loft with mezzanine area for games pull out couch and bunk bed) 2 full baths, full height stone fireplace, spacious living room and dining room with vaulted ceilings, well appointed kitchen with gas stove, rear entrance laundry area, front exposed aggregate patio, rear covered screened porch, and mechanical room with high efficiency furnace, on demand hot water, central vacuum, and central air conditioning. Heated garage with work bench offering perfect off season storage for boat, lawn care, and other lake toys. This wilderness retreat offers lake recreation.

Built in 2011

Essential Information

MLS® #	E4426122
Price	\$565,000



Bedrooms	3
Bathrooms	2.00
Full Baths	2
Square Footage	1,877
Acres	0.16
Year Built	2011
Type	Rural
Sub-Type	Detached Single Family
Style	1 and Half Storey
Status	Active

Community Information

Address	136c 8 Street
Area	Rural Parkland County
Subdivision	Seba Beach
City	Rural Parkland County
County	ALBERTA
Province	AB
Postal Code	T0E 2B0

Amenities

Features	Off Street Parking, Hot Water Instant, Lake Privileges, Patio, Vaulted Ceiling, See Remarks
Parking Spaces	3

Interior

Heating	Forced Air-1, Natural Gas
Stories	2
Has Basement	Yes
Basement	None, No Basement

Exterior

Exterior	See Remarks
Exterior Features	Backs Onto Park/Trees, Beach Access, Boating, Golf Nearby, Landscaped, Park/Reserve, Playground Nearby, Private Setting, Shopping Nearby, Treed Lot, See Remarks
Construction	See Remarks
Foundation	Slab

Additional Information

Date Listed March 14th, 2025

Days on Market 20

Zoning Zone 93

DATA IS DEEMED RELIABLE BUT IS NOT GUARANTEED ACCURATE BY THE REALTORS® ASSOCIATION OF EDMONTON. COPYRIGHT 2025 BY THE REALTORS® ASSOCIATION OF EDMONTON. ALL RIGHTS RESERVED. Trademarks are owned or controlled by the Canadian Real Estate Association (CREA) and identify real estate professionals who are members of CREA (REALTOR®, REALTORS®) and/or the quality of services they provide (MLS®, Multiple Listing Service®)

Listing information last updated on April 3rd, 2025 at 1:47am MDT