

\$455,555 - 15035 128 St Nw, Edmonton

MLS® #E4426673

\$455,555

3 Bedroom, 2.00 Bathroom, 1,408 sqft
Single Family

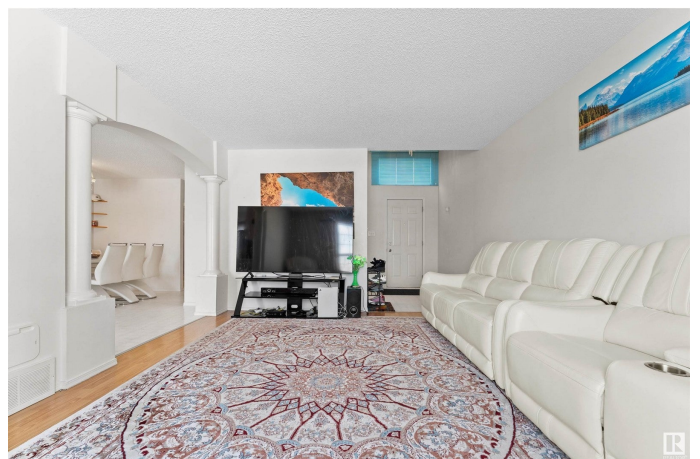
Cumberland, Edmonton, Alberta

HUGE YARD w/no back neighbours, 3 BEDROOM HOME + A MAIN FLOOR FULL BATH Fantastic 2-storey home in the highly desirable community of Cumberland, perfect for first-time homebuyers or investors looking to build equity! The main floor features a spacious living room with a large window that fills the space w/natural light. The kitchen offers plenty of counter space, maple-colored cabinets, and a spacious dining area. Step through the patio door to a beautifully landscaped, fully fenced backyard. A convenient 3pc bathroom completes the main level. Upstairs, you'll find three good-sized bedrooms, including the primary with a walk-in closet & access to a 4pc ensuite. The insulated basement offers two large windows, providing the potential for two additional bedrooms or your own finishing touches. A double attached garage and extra parking on the front driveway add to the convenience. Walking distance to schools, parks, shopping, and public transport. Easy access to Anthony Henday and Yellowhead Trail. (id:36535)

Built in 1996

Essential Information

Listing #	E4426673
Price	\$455,555
Bedrooms	3
Bathrooms	2.00



Square Footage 1,408
Year Built 1996
Type Single Family
Sub-Type Freehold

Community Information

Address 15035 128 St Nw
Subdivision Cumberland
City Edmonton
Province Alberta
Postal Code T6V1E8

Amenities

Amenities Playground, Public Transit, Schools, Shopping
Parking Attached Garage
of Garages 1

Interior

Appliances Dryer, Hood Fan, Refrigerator, Stove, Washer
Heating Forced air
of Stories 2

Listing Details

Listing Office Courtesy Of Mashal Vazir Muhammad Of Exp Realty



The trademarks MLS®, Multiple Listing Service® and the associated logos are owned by The Canadian Real Estate Association (CREA) and identify the quality of services provided by real estate professionals who are members of CREA. REALTOR®. Member of CREA and more.

Listing information last updated on April 2nd, 2025 at 1:47am MDT