

Courtesy Of Daljit Jajwan Of Real Broker

# \$620,000 - 52327 Range Road 233, Rural Strathcona County

MLS® #E4426726

**\$620,000**

0 Bedroom, 0.00 Bathroom,  
Rural on 0.35 Acres

Sherwood Golf & Country Club Estates, Rural Strathcona County, AB

Build your dream home on this Corner Lot situated on a quiet cul-de-sac in the Sherwood Park Golf and Country Club Estates. This 15066 square feet lot offers the perfect opportunity to create your dream home with the builder of your choice. Ideally located just minutes from the Whitemud and Anthony Henday, you'll enjoy easy access to major routes while being nestled in a tranquil, family-friendly suburb. Surrounded by scenic walking trails and lush green spaces, this lot provides the perfect blend of nature and convenience. Don't miss your chance to build in this sought-after community!

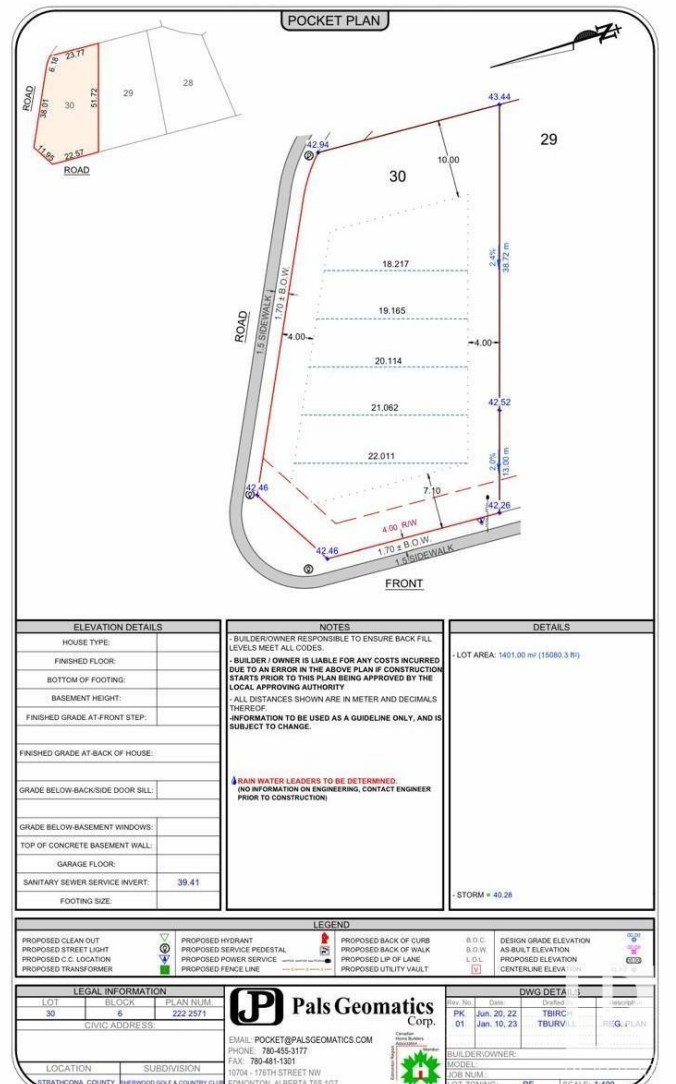


## Essential Information

MLS® #	E4426726
Price	\$620,000
Bathrooms	0.00
Acres	0.35
Type	Rural
Sub-Type	Vacant Lot/Land
Status	Active

## Community Information

Address 52327 Range Road 233



Area	Rural Strathcona County
Subdivision	Sherwood Golf & Country Club Estates
City	Rural Strathcona County
County	ALBERTA
Province	AB
Postal Code	T8B 1C7

### **Exterior**

Exterior Features Corner Lot, Flat Site, Golf Nearby, Paved Lane, Schools, Shopping Nearby

### **Additional Information**

Date Listed	March 20th, 2025
Days on Market	15
Zoning	Zone 80

DATA IS DEEMED RELIABLE BUT IS NOT GUARANTEED ACCURATE BY THE REALTORS® ASSOCIATION OF EDMONTON. COPYRIGHT 2025 BY THE REALTORS® ASSOCIATION OF EDMONTON. ALL RIGHTS RESERVED. Trademarks are owned or controlled by the Canadian Real Estate Association (CREA) and identify real estate professionals who are members of CREA (REALTOR®, REALTORS®) and/or the quality of services they provide (MLS®, Multiple Listing Service®)

Listing information last updated on April 4th, 2025 at 8:17am MDT