

Courtesy Of Sandy Kahlon and Ajay Kahlon Of RE/MAX Excellence

\$769,900 - 42 Dillworth Crescent, Spruce Grove

MLS® #E4426853

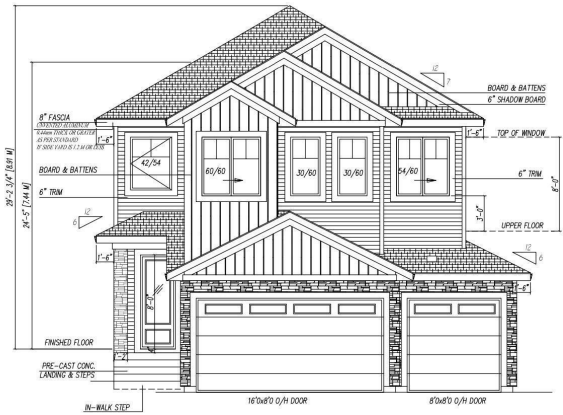
\$769,900

5 Bedroom, 3.00 Bathroom, 2,522 sqft

Single Family on 0.00 Acres

Deer Park_SPGR, Spruce Grove, AB

Welcome to this 2 Storey custom built house by VIBRANT HOMES! 2522sqft with 5-BEDROOMS and 3 FULL bathrooms. The main floor boasts a good sized bedroom and full bathroom. Coffered ceiling with OPEN to below family room, VIBRANT feature wall complete with an electric fireplace. CUSTOM kitchen with waterfall quartz countertops, two toned ceiling height cabinets, extended kitchen over looking the good sized nook area. A walk through pantry with plenty of storage space and a mudroom. Upstairs the spacious primary bedroom is complete with a spa-like 5 piece ensuite and walk-in closet. Additionally there are 3 good sized bedrooms, 4 piece bathroom, laundry room and huge BONUS room. Oversized TRIPLE CAR garage. BSMT offers a SEPARATE side entrance which awaits your personal touch making it a great INCOME potential. Premium lighting and plumbing package. Fully upgraded with sleek finishes. *Pictures are from another home built by same builder, posted for reference purposes. Finishes may vary. A must see!



Built in 2025

Essential Information

MLS® # E4426853

Price \$769,900

Bedrooms	5
Bathrooms	3.00
Full Baths	3
Square Footage	2,522
Acres	0.00
Year Built	2025
Type	Single Family
Sub-Type	Detached Single Family
Style	2 Storey
Status	Active

Community Information

Address	42 Dillworth Crescent
Area	Spruce Grove
Subdivision	Deer Park_SPGR
City	Spruce Grove
County	ALBERTA
Province	AB
Postal Code	T7X 0E6

Amenities

Amenities	Ceiling 10 ft., Ceiling 9 ft., Deck, Front Porch, Parking-Extra
Parking	Double Garage Attached, Front Drive Access, Tandem, Triple Garage Attached

Interior

Interior Features	ensuite bathroom
Appliances	Dishwasher-Built-In, Garage Control, Garage Opener, Hood Fan, Oven-Built-In, Oven-Microwave, Refrigerator, Stove-Countertop Electric
Heating	Forced Air-1, Natural Gas
Stories	2
Has Basement	Yes
Basement	Full, Unfinished

Exterior

Exterior	Wood, Stone, Vinyl
Exterior Features	Airport Nearby, Level Land, Playground Nearby, Public Transportation, Schools, Shopping Nearby
Roof	Asphalt Shingles

Construction Wood, Stone, Vinyl
Foundation Concrete Perimeter

Additional Information

Date Listed March 21st, 2025
Days on Market 14
Zoning Zone 91



DATA IS DEEMED RELIABLE BUT IS NOT GUARANTEED ACCURATE BY THE REALTORS® ASSOCIATION OF EDMONTON. COPYRIGHT 2025 BY THE REALTORS® ASSOCIATION OF EDMONTON. ALL RIGHTS RESERVED. Trademarks are owned or controlled by the Canadian Real Estate Association (CREA) and identify real estate professionals who are members of CREA (REALTOR®, REALTORS®) and/or the quality of services they provide (MLS®, Multiple Listing Service®)

Listing information last updated on April 4th, 2025 at 1:17pm MDT