

Courtesy Of Henry Han Of Century 21 Masters

# \$769,900 - 342 Canter Wynd Wynd, Sherwood Park

MLS® #E4427141

**\$769,900**

3 Bedroom, 2.50 Bathroom, 2,330 sqft  
Single Family on 0.00 Acres

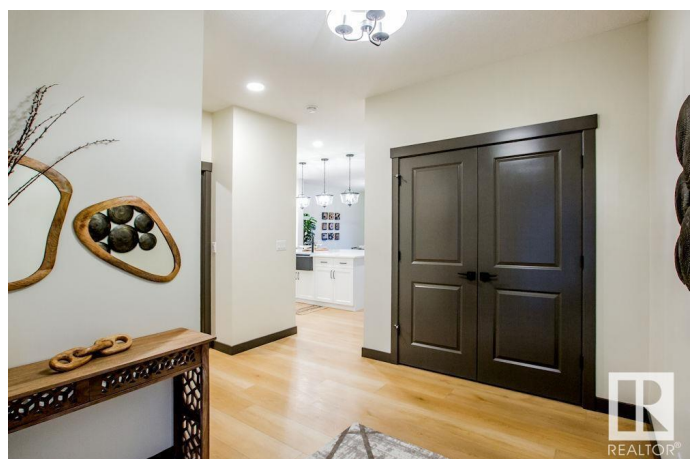
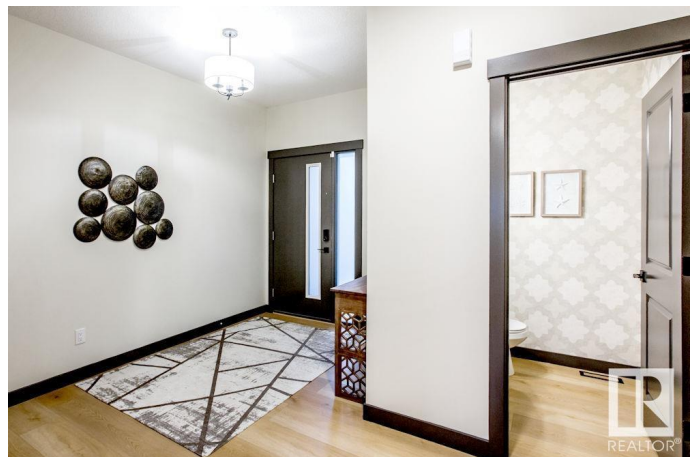
Cambrian, Sherwood Park, AB

Welcome to this stunning 2-story home. Featuring 3 beds, 2.5 baths, a walk-out basement, and a double attached garage. The main floor features a spacious open-concept layout with a large kitchen island and eat-at bar, and a convenient walk-through pantry connected to the mudroom, which includes built-in shelving and cubbies for perfect organization. The great room impresses with its dramatic open-to-below design, large windows, & a cozy fireplace, creating a bright and inviting atmosphere. Sliding patio doors off the nook provide easy access to the walk-out deck, perfect for outdoor relaxation. Upstairs, the extravagant primary ensuite boasts a drop-in tub and separate shower, while a spacious bonus room overlooks the main floor. Full quartz countertops throughout the home add a touch of elegance, and the side entrance to the basement allows for future development potential. This under-construction home will be ready for possession in spring 2025. Photos are representative

Built in 2024

## Essential Information

MLS® #	E4427141
Price	\$769,900



Bedrooms	3
Bathrooms	2.50
Full Baths	2
Half Baths	1
Square Footage	2,330
Acres	0.00
Year Built	2024
Type	Single Family
Sub-Type	Detached Single Family
Style	2 Storey
Status	Active

### **Community Information**

Address	342 Canter Wynd Wynd
Area	Sherwood Park
Subdivision	Cambrian
City	Sherwood Park
County	ALBERTA
Province	AB
Postal Code	T8H 2Z7

### **Amenities**

Amenities	No Animal Home, No Smoking Home, Walkout Basement
Parking	Double Garage Attached
Is Waterfront	Yes

### **Interior**

Interior Features	ensuite bathroom
Appliances	See Remarks
Heating	Forced Air-1, Natural Gas
Stories	2
Has Basement	Yes
Basement	Full, Unfinished

### **Exterior**

Exterior	Wood, Fiber Cement, Stone, Vinyl
Exterior Features	Backs Onto Lake, Creek, Golf Nearby, Playground Nearby, Shopping Nearby
Roof	Asphalt Shingles

Construction Wood, Fiber Cement, Stone, Vinyl  
Foundation Concrete Perimeter

### **Additional Information**

Date Listed March 24th, 2025  
Days on Market 10  
Zoning Zone 25

DATA IS DEEMED RELIABLE BUT IS NOT GUARANTEED ACCURATE BY THE REALTORS® ASSOCIATION OF EDMONTON. COPYRIGHT 2025 BY THE REALTORS® ASSOCIATION OF EDMONTON. ALL RIGHTS RESERVED. Trademarks are owned or controlled by the Canadian Real Estate Association (CREA) and identify real estate professionals who are members of CREA (REALTOR®, REALTORS®) and/or the quality of services they provide (MLS®, Multiple Listing Service®)

Listing information last updated on April 3rd, 2025 at 1:47am MDT