

Courtesy Of Dorothy M Cornel Of RE/MAX River City

\$399,900 - 5410 188 Street, Edmonton

MLS® #E4427619

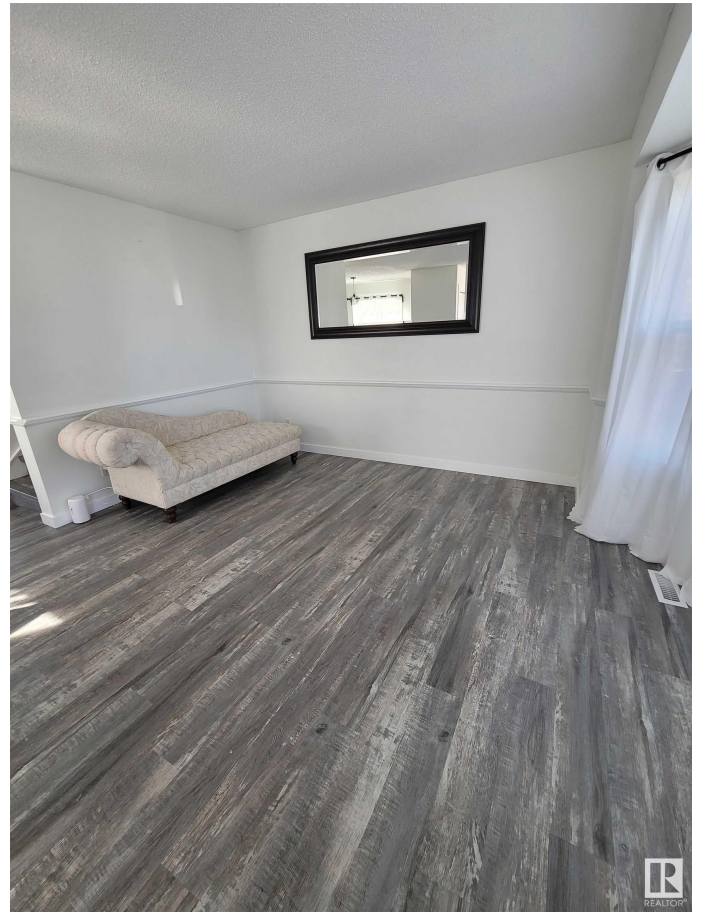
\$399,900

3 Bedroom, 1.50 Bathroom, 1,112 sqft

Single Family on 0.00 Acres

Jamieson Place, Edmonton, AB

Welcome to this well-maintained 2storey home nestled in a quiet street in Jamieson Place. The main floor boasts a welcoming living room with a charming bay window and an adjoining dining area—ideal for hosting gatherings. The bright and spacious kitchen features a cozy nook overlooking the landscaped backyard, complete with a large deck, two movable storage sheds, and convenient back lane access. Upstairs, you'll find three generously sized bedrooms and a 4-piece bath. The fully finished basement offers a warm and inviting family room with a gas fireplace, plus a functional laundry area with a sink. With both front and rear parking access, this home is as practical as it is charming. Located just minutes from Anthony Henday Drive and West Edmonton Mall, this is the perfect place to call home. Thoughtfully upgraded and move-in ready, this home is perfect for a growing family. Don't miss this incredible opportunity!



Built in 1986

Essential Information

| | |
|------------|-----------|
| MLS® # | E4427619 |
| Price | \$399,900 |
| Bedrooms | 3 |
| Bathrooms | 1.50 |
| Full Baths | 1 |

Half Baths 1
Square Footage 1,112
Acres 0.00
Year Built 1986
Type Single Family
Sub-Type Detached Single Family
Style 2 Storey
Status Active

Community Information

Address 5410 188 Street
Area Edmonton
Subdivision Jamieson Place
City Edmonton
County ALBERTA
Province AB
Postal Code T6M 1Z6

Amenities

Amenities Deck
Parking Front Drive Access

Interior

Appliances Dishwasher-Built-In, Dryer,
Stove-Electric, Washer
Heating Forced Air-1, Natural Gas
Stories 3
Has Basement Yes
Basement Full, Finished

Exterior

Exterior Wood, Vinyl
Exterior Features Shopping Nearby
Roof Asphalt Shingles
Construction Wood, Vinyl
Foundation Concrete Perimeter

Additional Information

Date Listed March 26th, 2025



| | |
|----------------|---------|
| Days on Market | 7 |
| Zoning | Zone 20 |

DATA IS DEEMED RELIABLE BUT IS NOT GUARANTEED ACCURATE BY THE REALTORS® ASSOCIATION OF EDMONTON. COPYRIGHT 2025 BY THE REALTORS® ASSOCIATION OF EDMONTON. ALL RIGHTS RESERVED. Trademarks are owned or controlled by the Canadian Real Estate Association (CREA) and identify real estate professionals who are members of CREA (REALTOR®, REALTORS®) and/or the quality of services they provide (MLS®, Multiple Listing Service®)

Listing information last updated on April 2nd, 2025 at 1:32am MDT