

Courtesy Of Heather M Joyes Of RE/MAX Excellence

\$884,900 - 53522 Rge Rd 272, Rural Parkland County

MLS® #E4427914

\$884,900

6 Bedroom, 4.00 Bathroom, 2,727 sqft

Rural on 2.15 Acres

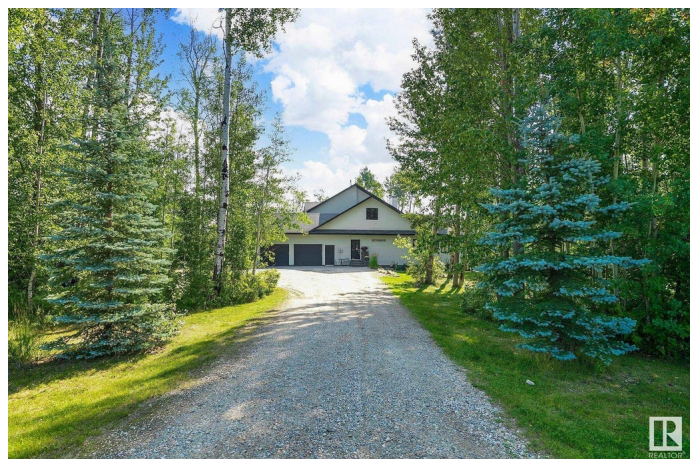
Century Estates (Parkland), Rural Parkland County, AB

Century Estates Custom Built Beauty tucked in a mature TREED 2.15 Acres. This 2700sf+ 2 Story home is fully finished = 4600sf developed and is PRIVATE! Thereâ€™s a large kitchen with loads of cabinetry, counter space, SS appliances, huge island + large walk thru pantry. The kitchen is open to the living room which showcases soaring ceilings, surround sound & slate surrounded wood burning fireplace. Large windows throughout offer views all around of mature trees. *6 Bedrooms *Master has a 5 pce ensuite with 6â€™ tub + w/2 walkin closets *all closets with organizers *MF laundry with cabinetry *huge 3 season sunroom *main floor + basement have INFLOOR HEAT *turnabout driveway *O/S heated dble garage interior 25x21 deep *Cleared for shop with utilities in place *septic field 2016 *Timber tech decking *AIR CON *luscious landscaping *perennials *raised veggie beds. ****All this mere minutes to Spruce Grove & all main thoroughfares. ****

Built in 2005

Essential Information

MLS® #	E4427914
Price	\$884,900
Bedrooms	6



Bathrooms	4.00
Full Baths	4
Square Footage	2,727
Acres	2.15
Year Built	2005
Type	Rural
Sub-Type	Detached Single Family
Style	2 Storey
Status	Active

Community Information

Address	53522 Rge Rd 272
Area	Rural Parkland County
Subdivision	Century Estates (Parkland)
City	Rural Parkland County
County	ALBERTA
Province	AB
Postal Code	T7X 3N2

Amenities

Features	Air Conditioner, Deck, No Smoking Home
Parking Spaces	6

Interior

Interior Features	ensuite bathroom
Heating	Forced Air-1, In Floor Heat System, Natural Gas
Fireplace	Yes
Stories	3
Has Basement	Yes
Basement	Full, Finished

Exterior

Exterior	Wood
Exterior Features	Fruit Trees/Shrubs, Golf Nearby, Low Maintenance Landscape, Treed Lot
Construction	Wood
Foundation	Concrete Perimeter

Additional Information

Date Listed March 28th, 2025

Days on Market 5

Zoning Zone 70

DATA IS DEEMED RELIABLE BUT IS NOT GUARANTEED ACCURATE BY THE REALTORS® ASSOCIATION OF EDMONTON. COPYRIGHT 2025 BY THE REALTORS® ASSOCIATION OF EDMONTON. ALL RIGHTS RESERVED. Trademarks are owned or controlled by the Canadian Real Estate Association (CREA) and identify real estate professionals who are members of CREA (REALTOR®, REALTORS®) and/or the quality of services they provide (MLS®, Multiple Listing Service®)

Listing information last updated on April 2nd, 2025 at 2:47am MDT