

# \$640,000 - 37 Meadowgrove Lane, Spruce Grove

MLS® #E4428024

**\$640,000**

4 Bedroom, 3.00 Bathroom, 2,161 sqft  
Single Family on 0.00 Acres

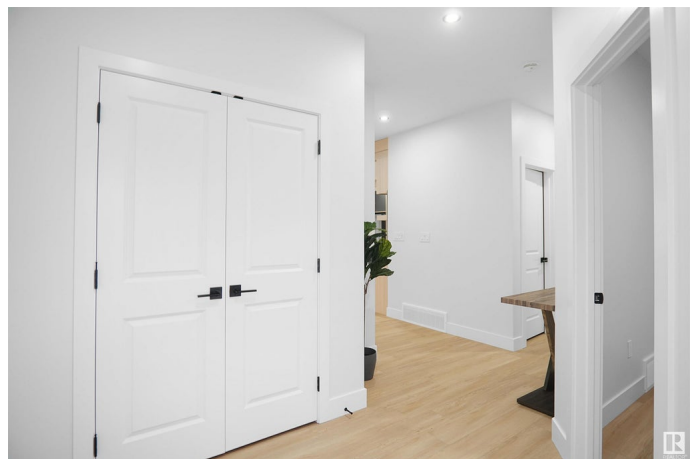
McLaughlin\_SPGR, Spruce Grove, AB

This beautiful open to above, upgraded home features 4 bedrooms, 3 baths, a bonus room and a Study table. The main floor boasts luxury vinyl plank flooring, a versatile bedroom/den, a Full Washroom, a spacious family room and cozy fireplace. The modern kitchen is designed for both cooking and entertaining, complete with high-end cabinetry, quartz countertops, a large island, stainless steel appliances, and a pantry. A bright dining area with ample natural light is perfect for gatherings, while a convenient full bath completes this level. PROPERTY IS UNDER CONSTRUCTION AND PHOTOS ARE FROM SIMILAR HOME. COLOURS MAY VARY. Upstairs, the primary suite offers a 5-piece ensuite and a spacious walk-in closet. Two additional bedrooms, a full bath, study table, a bonus room, and a laundry room provide plenty of space for the whole family. The unfinished basement comes with a separate entrance, offering endless possibilities for customization. Additional Features: Deck, Wireless Bluetooth Speakers, Gas Hookup for BBQ.

Built in 2025

## Essential Information

|        |           |
|--------|-----------|
| MLS® # | E4428024  |
| Price  | \$640,000 |



|                |                        |
|----------------|------------------------|
| Bedrooms       | 4                      |
| Bathrooms      | 3.00                   |
| Full Baths     | 3                      |
| Square Footage | 2,161                  |
| Acres          | 0.00                   |
| Year Built     | 2025                   |
| Type           | Single Family          |
| Sub-Type       | Detached Single Family |
| Style          | 2 Storey               |
| Status         | Active                 |

### **Community Information**

|             |                     |
|-------------|---------------------|
| Address     | 37 Meadowgrove Lane |
| Area        | Spruce Grove        |
| Subdivision | McLaughlin_SPGR     |
| City        | Spruce Grove        |
| County      | ALBERTA             |
| Province    | AB                  |
| Postal Code | T7X 0W2             |

### **Amenities**

|               |  |
|---------------|--|
| Amenities     | Deck, Detectors Smoke, No Animal Home, No Smoking Home, Natural Gas BBQ Hookup |
| Parking       | Double Garage Attached   |
| Is Waterfront | Yes  |

### **Interior**

|                   |   |
|-------------------|---|
| Interior Features | ensuite bathroom  |
| Appliances        | Dishwasher-Built-In, Dryer, Garage Control, Garage Opener, Refrigerator, Stove-Electric, Washer |
| Heating           | Forced Air-1, Natural Gas   |
| Fireplace         | Yes   |
| Fireplaces        | Glass Door  |
| Stories           | 2   |
| Has Basement      | Yes   |
| Basement          | Full, Unfinished  |

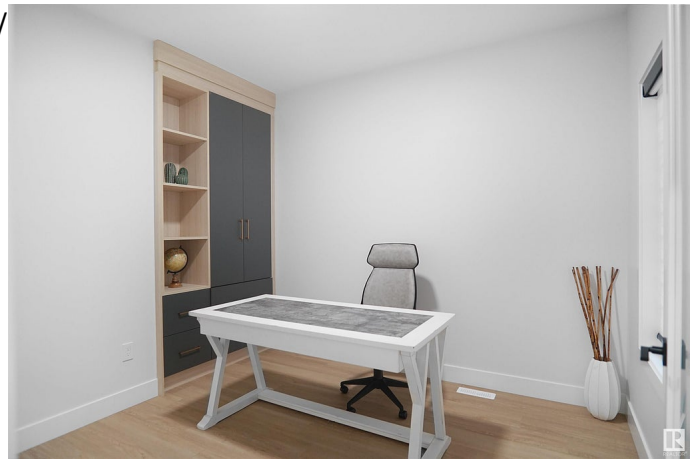
### **Exterior**

|          |                    |
|----------|--------------------|
| Exterior | Wood, Stone, Vinyl |
|----------|--------------------|

Exterior Features Creek, Golf Nearby, Park/  
Shopping Nearby  
Roof Asphalt Shingles  
Construction Wood, Stone, Vinyl  
Foundation Concrete Perimeter

**Additional Information**

Date Listed March 28th, 2025  
Days on Market 15  
Zoning Zone 91



DATA IS DEEMED RELIABLE BUT IS NOT GUARANTEED ACCURATE BY THE REALTORS® ASSOCIATION OF EDMONTON. COPYRIGHT 2025 BY THE REALTORS® ASSOCIATION OF EDMONTON. ALL RIGHTS RESERVED. Trademarks are owned or controlled by the Canadian Real Estate Association (CREA) and identify real estate professionals who are members of CREA (REALTOR®, REALTORS®) and/or the quality of services they provide (MLS®, Multiple Listing Service®)

Listing information last updated on April 12th, 2025 at 6:47am MDT