

\$569,900 - 591 Crimson Drive, Sherwood Park

MLS® #E4428290

\$569,900

4 Bedroom, 3.50 Bathroom, 1,870 sqft
Single Family on 0.00 Acres

Lakeland Ridge, Sherwood Park, AB

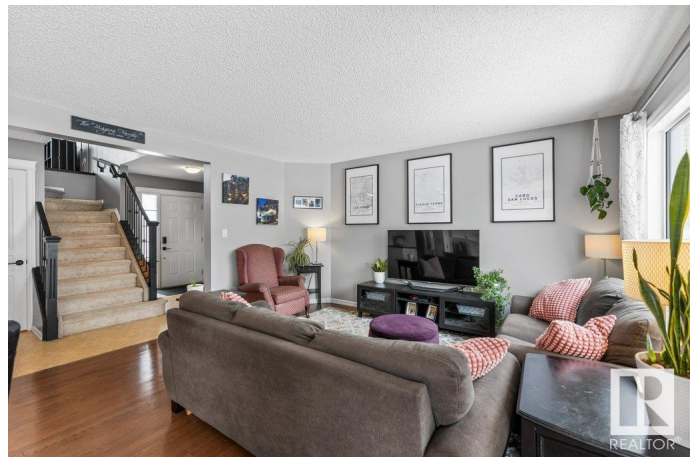
Welcome to this immaculate, FULLY FINISHED 2 storey. The main floor has a bright and open concept and has a large living room, an updated kitchen featuring white cabinets, new backsplash, new fridge and stove, corner pantry and large ISLAND. There is a spacious dining nook loaded with windows and access to the large back deck!

Completing the main floor is a renovated LAUNDRY ROOM with extra storage and a cute half bath. Upstairs has a fanatics bonus room with high ceilings and a corner GAS FIREPLACE. There are 3 bedrooms and an UPDATED main 4pce bathroom. The primar bedroom has a walk-in closet and 4pce ensuite with new vinyl plank floors. The basement is fully finished with a 4th bedroom, 3pce bath and family room. ALL NEW WINDOWS on the top two floors, central A/C and insulated and drywalled garage complete this amazing package!

Built in 2007

Essential Information

MLS® #	E4428290
Price	\$569,900
Bedrooms	4
Bathrooms	3.50
Full Baths	3



Half Baths	1
Square Footage	1,870
Acres	0.00
Year Built	2007
Type	Single Family
Sub-Type	Detached Single Family
Style	2 Storey
Status	Active

Community Information

Address	591 Crimson Drive
Area	Sherwood Park
Subdivision	Lakeland Ridge
City	Sherwood Park
County	ALBERTA
Province	AB
Postal Code	T8H 0H3

Amenities

Amenities	Deck
Parking	Double Garage Attached

Interior

Interior Features	ensuite bathroom
Appliances	Air Conditioning-Central, Dishwasher-Built-In, Dryer, Garage Control, Garage Opener, Hood Fan, Refrigerator, Storage Shed, Stove-Electric, Washer, Window Coverings
Heating	Forced Air-1, Natural Gas
Stories	3
Has Basement	Yes
Basement	Full, Finished

Exterior

Exterior	Wood, Vinyl
Exterior Features	Fenced, Landscaped
Roof	Asphalt Shingles
Construction	Wood, Vinyl
Foundation	Concrete Perimeter

Additional Information

Date Listed March 31st, 2025

Days on Market 3

Zoning Zone 25

DATA IS DEEMED RELIABLE BUT IS NOT GUARANTEED ACCURATE BY THE REALTORS® ASSOCIATION OF EDMONTON. COPYRIGHT 2025 BY THE REALTORS® ASSOCIATION OF EDMONTON. ALL RIGHTS RESERVED. Trademarks are owned or controlled by the Canadian Real Estate Association (CREA) and identify real estate professionals who are members of CREA (REALTOR®, REALTORS®) and/or the quality of services they provide (MLS®, Multiple Listing Service®)

Listing information last updated on April 3rd, 2025 at 1:32am MDT