

\$165,000

Hairsine, Edmonton, AB

Investor Alert or Perfect First Home! This spacious 3 bed, 2.5 bath townhome offers a functional layout with a partially finished basement featuring a rec room and half bath. Conveniently located next to the Anthony Henday for easy commuting. Clareview LRT Station is close by, and you're just minutes from Costco, Superstore, Walmart, and the Clareview Community Rec Centre. Situated near good schools and the river valley trail system, this location offers both convenience and lifestyle. A great opportunity with cashflow potentialâ€”donâ€™t miss it! Please note the property is sold as is where is at time of possession. No representations or warranties

Built in 1978

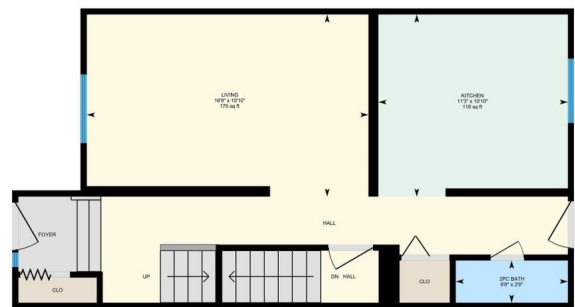
Essential Information

| | |
|----------------|-------------------|
| MLS® # | E4429274 |
| Price | \$165,000 |
| Bedrooms | 3 |
| Bathrooms | 2.50 |
| Full Baths | 2 |
| Half Baths | 1 |
| Square Footage | 1,051 |
| Acres | 0.00 |
| Year Built | 1978 |
| Type | Condo / Townhouse |



3115 144 Ave NW, Edmonton, AB

Main Floor Exterior Area 555.01 sq ft



A horizontal number line with arrows at both ends. It has tick marks at 0, 1, 2, 3, 4, 5, and 6. The segment between 2 and 3 is shaded black.

PREPARED: 2025/04/03

White regions are excluded from total floor area in IGUIDE floor plans. All room dimensions and floor areas must be considered approximate and are subject to independent verification.

3115 144 Ave NW, Edmonton, AB

2nd Floor Exterior Area 496.31 sq ft

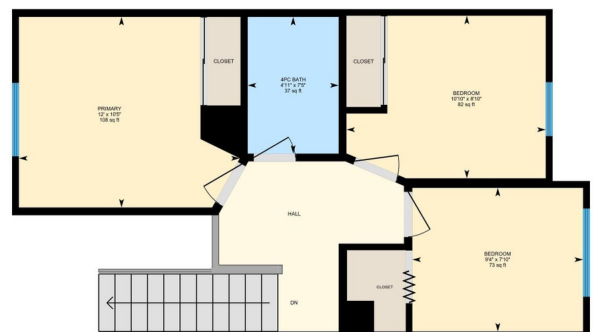


Diagram of a beam of length 6 ft. The load is triangular, starting at 0 at the left end, increasing linearly to 3 k/ft at the midpoint (3 ft), and then decreasing linearly back to 0 at the right end (6 ft).

PREPARED: 2025/04/03

While regions are excluded from total floor area in IGUDE floor plans, all room dimensions and floor areas must be considered approximate and are subject to independent verification.

| | |
|----------|-----------|
| Sub-Type | Townhouse |
| Style | 2 Storey |
| Status | Active |

Community Information

| | |
|-------------|-----------------|
| Address | 3115 144 Avenue |
| Area | Edmonton |
| Subdivision | Hairsine |
| City | Edmonton |
| County | ALBERTA |
| Province | AB |
| Postal Code | T5Y 1H4 |

Amenities

| | |
|-----------|-------------|
| Amenities | See Remarks |
| Parking | Stall |

Interior

| | |
|--------------|---------------------------|
| Appliances | See Remarks |
| Heating | Forced Air-1, Natural Gas |
| Stories | 3 |
| Has Basement | Yes |
| Basement | Full, Finished |

Exterior

| | |
|-------------------|--------------------|
| Exterior | Wood |
| Exterior Features | See Remarks |
| Roof | Asphalt Shingles |
| Construction | Wood |
| Foundation | Concrete Perimeter |

Additional Information

| | |
|-----------------|-----------------|
| Date Listed | April 5th, 2025 |
| Days on Market | 14 |
| Zoning | Zone 35 |
| RE / Bank Owned | Yes |

DATA IS DEEMED RELIABLE BUT IS NOT GUARANTEED ACCURATE BY THE REALTORS® ASSOCIATION OF EDMONTON. COPYRIGHT 2025 BY THE REALTORS® ASSOCIATION OF EDMONTON. ALL RIGHTS RESERVED. Trademarks are owned or controlled by the Canadian Real Estate Association (CREA) and identify real estate professionals who are members of CREA (REALTOR®, REALTORS®) and/or the quality of services they

provide (MLS®®, Multiple Listing Service®®)
Listing information last updated on April 19th, 2025 at 7:02pm MDT