

\$190,000 - 228 3425 19 Street, Edmonton

MLS® #E4429669

\$190,000

2 Bedroom, 2.00 Bathroom, 865 sqft

Condo / Townhouse on 0.00 Acres

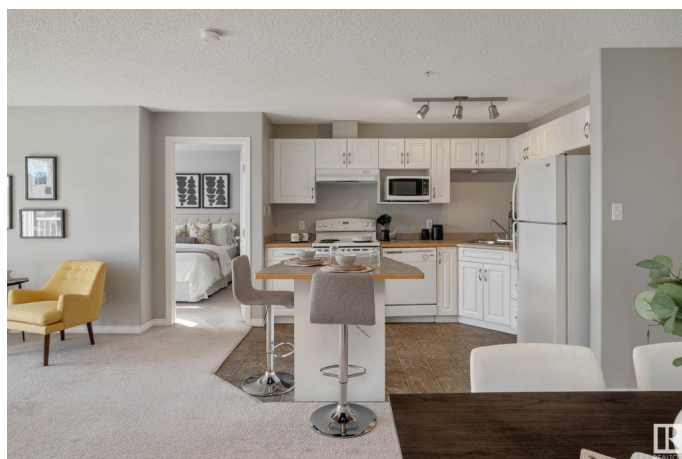
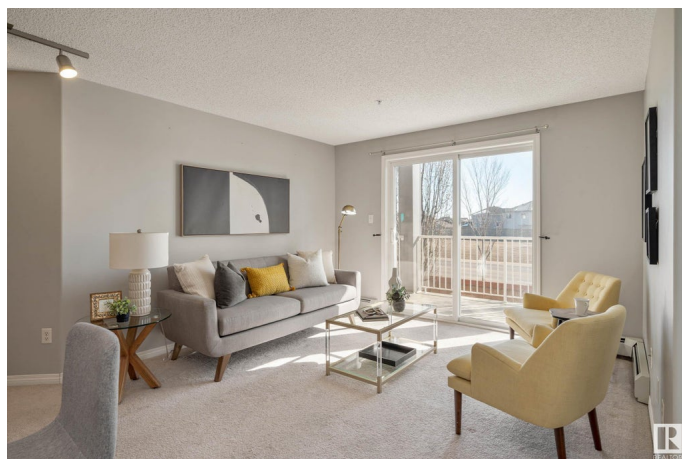
Wild Rose, Edmonton, AB

Easy Living at Park Place Meadows! This well maintained condo has an excellent layout for comfortable living. The open living, dining and kitchen offers plenty of space and enough room for a full sized dining table. Walk out to your balcony from the living room. On one side of the living area you will find the primary bedroom with a walk in closet - complete with closet organizers and a 4 pc ensuite. The 2nd full-sized bedroom and 4 pc main bath complete the other side giving good separation, from roommates, family, or guests. You will also find an in-suite laundry and a large dedicated storage room within the unit. Close to Whitemud Drive, Anthony Henday and Sherwood Park. With shopping and restaurants around the corner, this condo is a must see!

Built in 2005

Essential Information

MLS® #	E4429669
Price	\$190,000
Bedrooms	2
Bathrooms	2.00
Full Baths	2
Square Footage	865
Acres	0.00
Year Built	2005



Type	Condo / Townhouse
Sub-Type	Lowrise Apartment
Style	Single Level Apartment
Status	Active

Community Information

Address	228 3425 19 Street
Area	Edmonton
Subdivision	Wild Rose
City	Edmonton
County	ALBERTA
Province	AB
Postal Code	T6T 2B5

Amenities

Amenities	Parking-Plug-Ins, Parking-Visitor, Party Room, Security Door, Storage-In-Suite
Parking	Stall

Interior

Interior Features	ensuite bathroom
Appliances	Dishwasher-Built-In, Hood Fan, Oven-Microwave, Refrigerator, Stacked Washer/Dryer, Stove-Electric, Window Coverings
Heating	Baseboard, Natural Gas
# of Stories	4
Stories	1
Has Basement	Yes
Basement	None, No Basement

Exterior

Exterior	Wood, Vinyl
Exterior Features	Golf Nearby, Shopping Nearby
Roof	Asphalt Shingles
Construction	Wood, Vinyl
Foundation	Concrete Perimeter

School Information

Elementary	Velma E. Baker
Middle	Thelma Chalifoux

High Elder Dr. Francis

Additional Information

Date Listed April 8th, 2025
Days on Market 11
Zoning Zone 30
Condo Fee \$474

DATA IS DEEMED RELIABLE BUT IS NOT GUARANTEED ACCURATE BY THE REALTORS® ASSOCIATION OF EDMONTON. COPYRIGHT 2025 BY THE REALTORS® ASSOCIATION OF EDMONTON. ALL RIGHTS RESERVED.Trademarks are owned or controlled by the Canadian Real Estate Association (CREA) and identify real estate professionals who are members of CREA (REALTOR®, REALTORS®) and/or the quality of services they provide (MLS®, Multiple Listing Service®)
Listing information last updated on April 19th, 2025 at 4:17am MDT