

\$569,702 - Rr 220 Twp Rd 530, Rural Strathcona County

MLS® #E4429815

\$569,702

0 Bedroom, 0.00 Bathroom,
Rural on 29.90 Acres

None, Rural Strathcona County, AB

CLOSE PROXIMITY TO ARDROSSAN AND SHERWOOD PARK!...BEAUTIFUL ROLLING LAND, TREED, PRIVATE SETTING...GREAT BUILDING SITE...APPROACHES PAID FOR, PAID TO LOT LINE...GAS AND POWER ADJACENT TO PROPERTY...VERY PRIVATE!

Essential Information

MLS® #	E4429815
Price	\$569,702
Bathrooms	0.00
Acres	29.90
Type	Rural
Sub-Type	Vacant Lot/Land
Status	Active

Community Information

Address	Rr 220 Twp Rd 530
Area	Rural Strathcona County
Subdivision	None
City	Rural Strathcona County
County	ALBERTA
Province	AB
Postal Code	T8A 6M8

Exterior



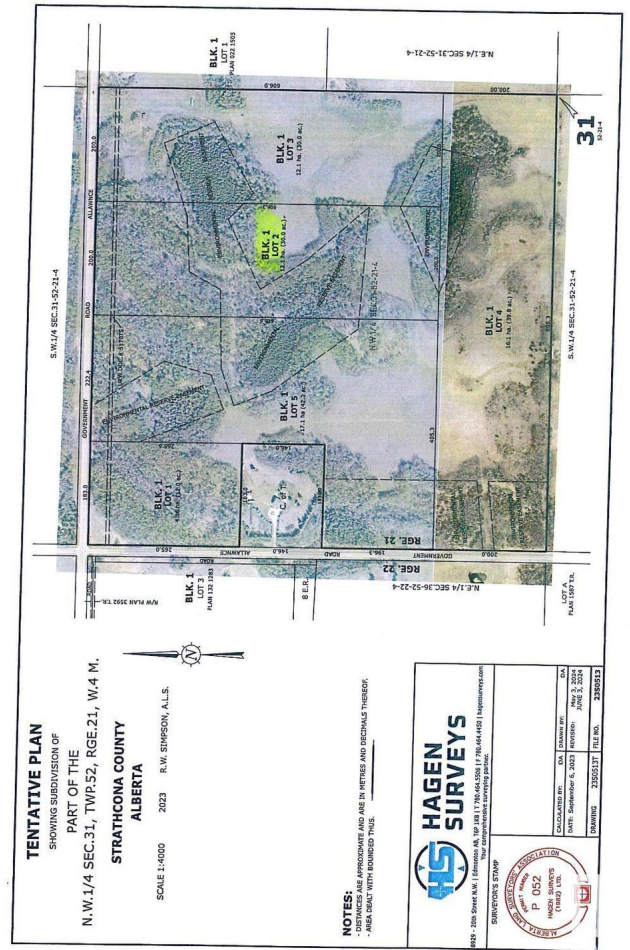
Exterior Features Private Setting, Rolling Land,

Additional Information

Date Listed April 9th, 2025

Days on Market 13

Zoning Zone 80



DATA IS DEEMED RELIABLE BUT IS NOT GUARANTEED ACCURATE BY THE REALTORS® ASSOCIATION OF EDMONTON. COPYRIGHT 2025 BY THE REALTORS® ASSOCIATION OF EDMONTON. ALL RIGHTS RESERVED. Trademarks are owned or controlled by the Canadian Real Estate Association (CREA) and identify real estate professionals who are members of CREA (REALTOR®/REALTORS®) and/or the quality of services they provide (MLS®/Multiple Listing Service®). Listing information last updated on April 22nd, 2025 at 11:02am MDT

