

## \$825,000 - Se 26 & Ne 23 59;10;4, Rural St. Paul County

MLS® #E4431383

**\$825,000**

0 Bedroom, 0.00 Bathroom,  
Rural on 309.93 Acres

None, Rural St. Paul County, AB

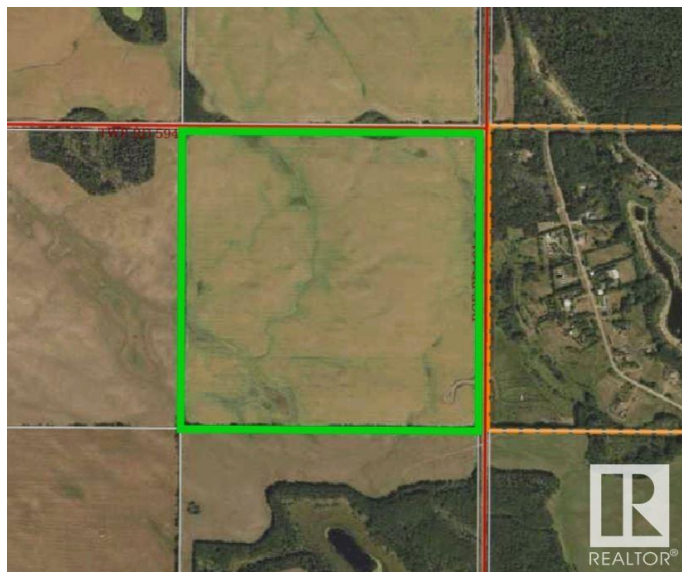
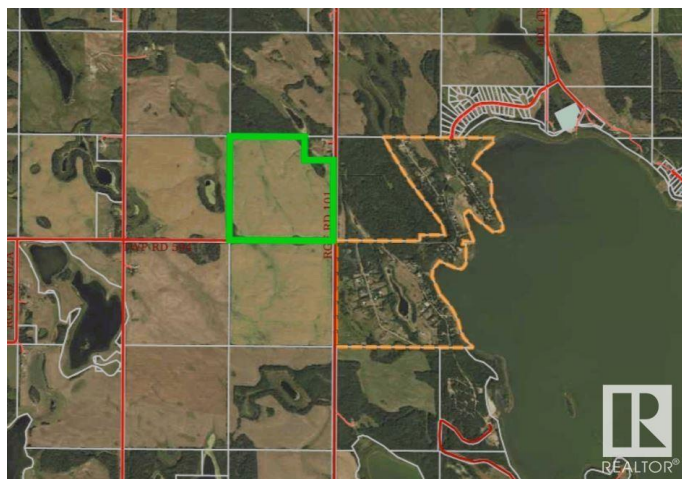
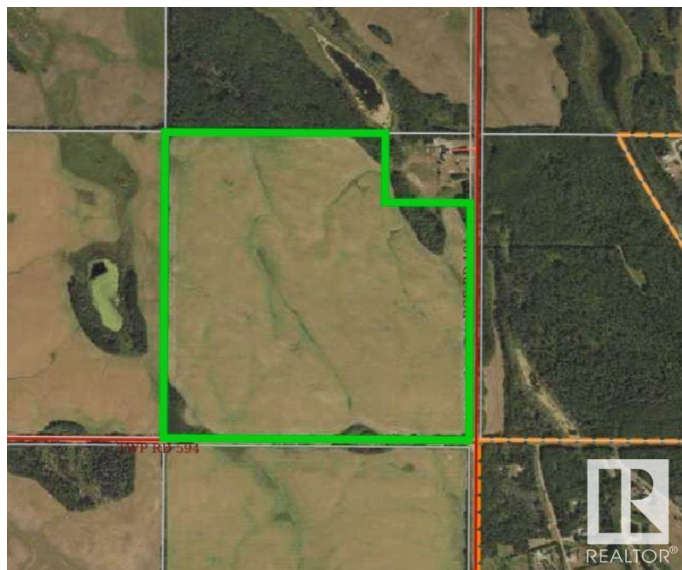
An excellent opportunity to expand your current farming operation—this listing includes over 300 acres across two adjoining quarter sections, located just 15 minutes north of St. Paul. Whether you’re looking to increase your pasture, hay land, or crop production, this versatile parcel offers plenty of potential. Additionally, enjoy the benefit of oil lease revenue for a steady stream of supplementary income. With easy access and open terrain, this is a solid investment for any agricultural producer.

### Essential Information

MLS® #	E4431383
Price	\$825,000
Bathrooms	0.00
Acres	309.93
Type	Rural
Sub-Type	Vacant Lot/Land
Status	Active

### Community Information

Address	Se 26 & Ne 23 59;10;4
Area	Rural St. Paul County
Subdivision	None
City	Rural St. Paul County
County	ALBERTA



Province AB  
Postal Code T0A 3A1

Exterior

Exterior Features Rolling Land

Additional Information

Date Listed April 17th, 2025  
Days on Market 4  
Zoning Zone 60

DATA IS DEEMED RELIABLE BUT IS NOT GUARANTEED ACCURATE BY THE REALTORS® ASSOCIATION OF EDMONTON. COPYRIGHT 2025 BY THE REALTORS® ASSOCIATION OF EDMONTON. ALL RIGHTS RESERVED.Trademarks are owned or controlled by the Canadian Real Estate Association (CREA) and identify real estate professionals who are members of CREA (REALTOR®, REALTORS®) and/or the quality of services they provide (MLS®, Multiple Listing Service®)  
Listing information last updated on April 21st, 2025 at 5:17am MDT