

## \$540,000 - 5502 60 Avenue, Vegreville

MLS® #E4431457

**\$540,000**

3 Bedroom, 2.00 Bathroom, 1,646 sqft

Single Family on 0.00 Acres

Vegreville, Vegreville, AB

Brand new Bilevel being built in the new Foxview subdivision in Vegreville. Looking for "NEW" with the finishings and colours of your choice? Look no further. This 1646 sq ft home is under construction and will be ready to go in the not to distant future!

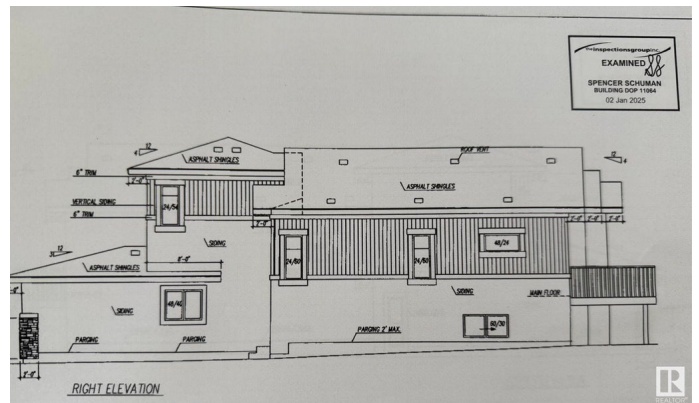
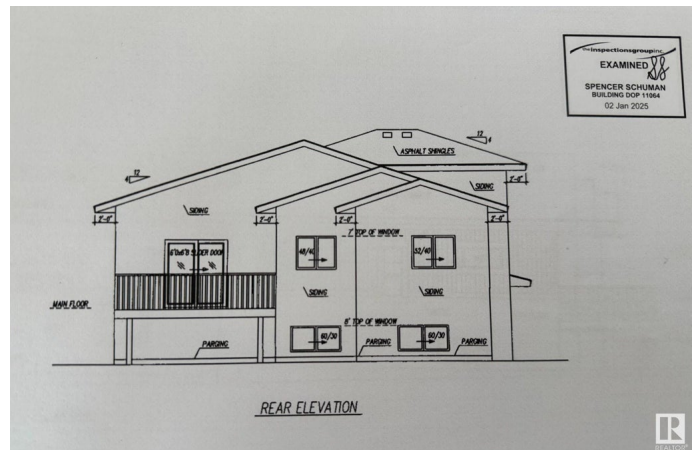
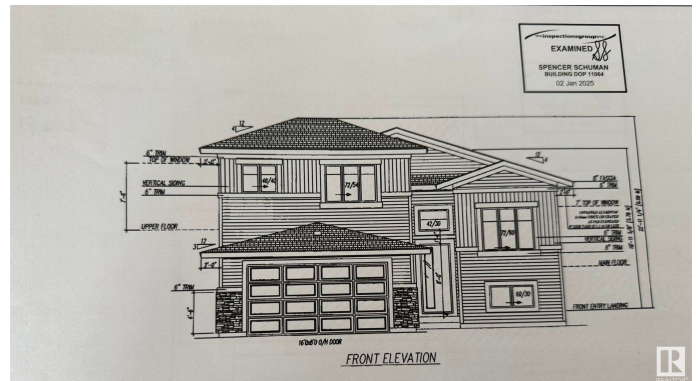
Built in 2025

### Essential Information

|                |                        |
|----------------|------------------------|
| MLS® #         | E4431457               |
| Price          | \$540,000              |
| Bedrooms       | 3                      |
| Bathrooms      | 2.00                   |
| Full Baths     | 2                      |
| Square Footage | 1,646                  |
| Acres          | 0.00                   |
| Year Built     | 2025                   |
| Type           | Single Family          |
| Sub-Type       | Detached Single Family |
| Style          | Bi-Level               |
| Status         | Active                 |

### Community Information

|             |                |
|-------------|----------------|
| Address     | 5502 60 Avenue |
| Area        | Vegreville     |
| Subdivision | Vegreville     |
| City        | Vegreville     |



|             |         |
|-------------|---------|
| County      | ALBERTA |
| Province    | AB      |
| Postal Code | T9C 1J4 |

### **Amenities**

|           |                                    |
|-----------|------------------------------------|
| Amenities | Hot Water Natural Gas, See Remarks |
| Parking   | Double Garage Attached             |

### **Interior**

|                   |                           |
|-------------------|---------------------------|
| Interior Features | ensuite bathroom          |
| Appliances        | None                      |
| Heating           | Forced Air-1, Natural Gas |
| Stories           | 2                         |
| Has Basement      | Yes                       |
| Basement          | Full, See Remarks         |

### **Exterior**

|                   |   |
|-------------------|---|
| Exterior          | Wood, See Remarks   |
| Exterior Features | Airport Nearby, Corner Lot, Golf Nearby, No Back Lane, Playground Nearby, Schools, Shopping Nearby, See Remarks |
| Roof              | Asphalt Shingles  |
| Construction      | Wood, See Remarks   |
| Foundation        | Concrete Perimeter  |

### **Additional Information**

|                |                  |
|----------------|------------------|
| Date Listed    | April 17th, 2025 |
| Days on Market | 3                |
| Zoning         | Zone 60          |

DATA IS DEEMED RELIABLE BUT IS NOT GUARANTEED ACCURATE BY THE REALTORS® ASSOCIATION OF EDMONTON. COPYRIGHT 2025 BY THE REALTORS® ASSOCIATION OF EDMONTON. ALL RIGHTS RESERVED. Trademarks are owned or controlled by the Canadian Real Estate Association (CREA) and identify real estate professionals who are members of CREA (REALTOR®, REALTORS®) and/or the quality of services they provide (MLS®, Multiple Listing Service®)

Listing information last updated on April 20th, 2025 at 3:47am MDT