

# \$619,900 - 3939 5 Avenue, Edmonton

MLS® #E4432202

**\$619,900**

3 Bedroom, 2.50 Bathroom, 2,130 sqft

Single Family on 0.00 Acres

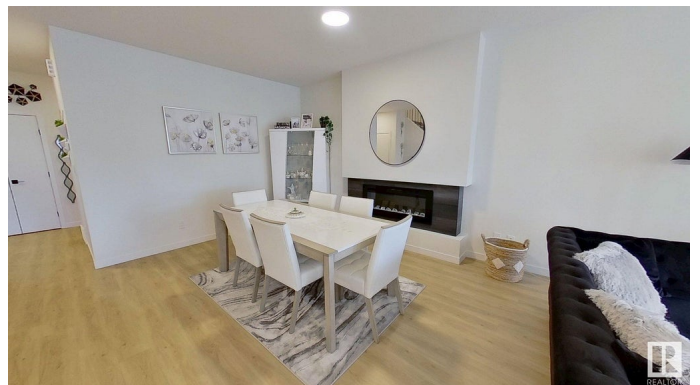
Charlesworth, Edmonton, AB

Immaculate 2 story single family 2022 built 2,130 sq feet with 3 bedrooms. The spacious living room serves as the centerpiece of the home while the entrance and storage room are big enough to accommodate the hustle and bustle of family life. The large kitchen is crafted to withstand meal preps of any size. Upstairs, the primary suite is the best place to sit back and relax, with a beautiful 5-piece ensuite with tiled shower and standalone tub. This home backs onto a park, making family time that much more accessible.

Built in 2022

## Essential Information

MLS® #	E4432202
Price	\$619,900
Bedrooms	3
Bathrooms	2.50
Full Baths	2
Half Baths	1
Square Footage	2,130
Acres	0.00
Year Built	2022
Type	Single Family
Sub-Type	Detached Single Family
Style	2 Storey
Status	Active



## Community Information

Address 3939 5 Avenue  
Area Edmonton  
Subdivision Charlesworth  
City Edmonton  
County ALBERTA  
Province AB  
Postal Code T6X 2X8

## Amenities

Amenities Ceiling 9 ft., Closet Organizers, Deck, Detectors Smoke  
Parking Double Garage Attached, Stall

## Interior

Interior Features ensuite bathroom  
Appliances Dishwasher-Built-In, Dryer, Garage Opener, Hood Fan,  
Oven-Microwave, Refrigerator, Stove-Gas, Washer  
Heating Forced Air-1, Natural Gas  
Fireplace Yes  
Fireplaces Insert, Remote Control  
Stories 2  
Has Basement Yes  
Basement Full, Unfinished

## Exterior

Exterior Wood, Vinyl  
Exterior Features Backs Onto Park/Trees, Fenced, Playground Nearby, Public  
Transportation, Shopping Nearby  
Roof Asphalt Shingles  
Construction Wood, Vinyl  
Foundation Concrete Perimeter

## Additional Information

Date Listed April 23rd, 2025  
Days on Market 1  
Zoning Zone 53  
HOA Fees 200  
HOA Fees Freq. Annually

DATA IS DEEMED RELIABLE BUT IS NOT GUARANTEED ACCURATE BY THE REALTORS® ASSOCIATION OF

EDMONTON. COPYRIGHT 2025 BY THE REALTORS® ASSOCIATION OF EDMONTON. ALL RIGHTS RESERVED. Trademarks are owned or controlled by the Canadian Real Estate Association (CREA) and identify real estate professionals who are members of CREA (REALTOR®, REALTORS®) and/or the quality of services they provide (MLS®, Multiple Listing Service®)

Listing information last updated on April 23rd, 2025 at 11:47pm MDT