

\$373,000 - 48 6905 25 Avenue, Edmonton

MLS® #E4432690

\$373,000

1 Bedroom, 1.00 Bathroom, 501 sqft
Condo / Townhouse on 0.00 Acres

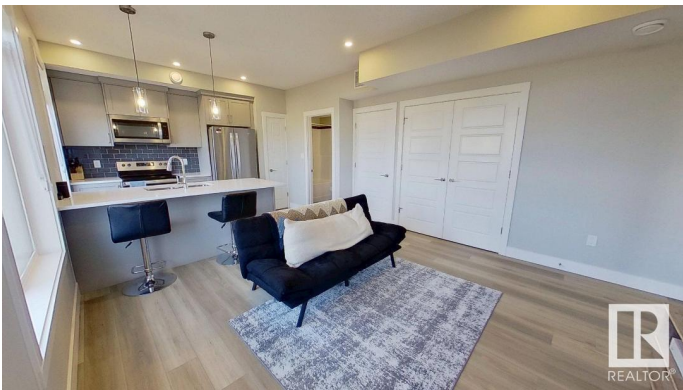
The Orchards At Ellerslie, Edmonton, AB

Modern One-Bedroom Townhouse in The Orchards! Welcome to this stunning newly built one-bedroom townhouse in the sought-after Orchards community of southwest Edmonton. Constructed in 2024, this home offers contemporary design, energy-efficient features, and unbeatable convenience—all within a vibrant and growing neighborhood. Essential amenities, including grocery stores, gas stations, schools, and bus transit, are all within a five- minute radius. Inside, the stylish open-concept layout is complemented by large windows, sleek finishes, and a modern kitchen equipped with high-end appliances and elegant cabinetry.

Built in 2024

Essential Information

MLS® #	E4432690
Price	\$373,000
Bedrooms	1
Bathrooms	1.00
Full Baths	1
Square Footage	501
Acres	0.00
Year Built	2024
Type	Condo / Townhouse
Sub-Type	Townhouse



Style	Single Level Apartment
Status	Active

Community Information

Address	48 6905 25 Avenue
Area	Edmonton
Subdivision	The Orchards At Ellerslie
City	Edmonton
County	ALBERTA
Province	AB
Postal Code	T6X 1A1

Amenities

Amenities	Ceiling 9 ft., Club House, Detectors Smoke, Front Porch, Hot Water Natural Gas, Parking-Visitor, Smart/Program. Thermostat, Recreation Room/Centre, Storage-In-Suite
Parking	Stall

Interior

Appliances	Dishwasher-Built-In, Dryer, Freezer, Microwave Hood Fan, Oven-Built-In, Oven-Microwave, Refrigerator, Stove-Countertop Electric, Stove-Electric, Washer, Window Coverings
Heating	Baseboard, Natural Gas
Stories	1
Has Basement	Yes
Basement	None, No Basement

Exterior

Exterior	Wood
Exterior Features	Landscaped, Level Land, Paved Lane, Playground Nearby, Public Transportation, Schools, Shopping Nearby
Roof	Asphalt Shingles
Construction	Wood
Foundation	Concrete Perimeter

Additional Information

Date Listed	April 25th, 2025
Days on Market	4
Zoning	Zone 53
Condo Fee	\$105

DATA IS DEEMED RELIABLE BUT IS NOT GUARANTEED ACCURATE BY THE REALTORS® ASSOCIATION OF EDMONTON. COPYRIGHT 2025 BY THE REALTORS® ASSOCIATION OF EDMONTON. ALL RIGHTS RESERVED. Trademarks are owned or controlled by the Canadian Real Estate Association (CREA) and identify real estate professionals who are members of CREA (REALTOR®, REALTORS®) and/or the quality of services they provide (MLS®, Multiple Listing Service®)

Listing information last updated on April 29th, 2025 at 8:47am MDT