

# \$173,000 - 201, 3 Parklane Way, Strathmore

MLS® #A2181586

**\$173,000**

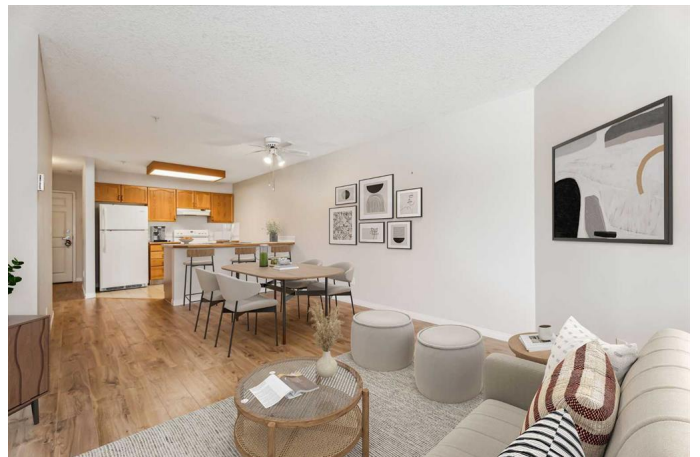
1 Bedroom, 1.00 Bathroom, 731 sqft

Residential on 0.02 Acres

Downtown\_Strathmore, Strathmore, Alberta

~~55+ LIVING AT ITS FINEST~~

WELCOME HOME to the comfort & convenience of living at the highly coveted Lambert Village! This beautiful & well managed adult living complex offers a wonderful community with social activities and amenities to keep you busy & entertained. You can curl up & enjoy a good book in the well stocked library, cozy up by the fireplace in the social lounge, show off your creative talents in the crafts room, socialize with your neighbours in the media/games/rec rooms, stay fit & active with access to the wellness room or enjoy the benefits of an in-house hair salon. Your personal unit includes an inviting entrance and a bright and functional kitchen with plenty of cabinetry and counter space. The kitchen opens to the dining and living areas, providing direct access to the private balcony with views of the greenspace and beyond - the perfect spot to relax & enjoy a nice warm cup of coffee & take in all the sunshine you need! Your lovely home also includes a spacious master bedroom with plenty of closet space. Completing your home is a large 4pc bath & the convenience of in-suite laundry! Condo Fees include water, sewer, trash, cable TV and many many amenities to round out your adult living experience. So, set aside all your worries & just enjoy life! This complex also offers additional visitor parking stalls, RV Parking & GUEST SUITE available for rent (subject to availability) when you have overnight guests!



Step right outside & enjoy the Beautiful greenspaces on the property & huge nature area next door or take a stroll around the tranquil walking paths, ponds and Kinsmen Park! This is the ideal place to call HOME! Simply move in & enjoy the vibrant, active and maintenance free lifestyle of living in Lambert Village!

Built in 1996

### **Essential Information**

MLS® #	A2181586
Price	\$173,000
Bedrooms	1
Bathrooms	1.00
Full Baths	1
Square Footage	731
Acres	0.02
Year Built	1996
Type	Residential
Sub-Type	Apartment
Style	Low-Rise(1-4)
Status	Active

### **Community Information**

Address	201, 3 Parklane Way
Subdivision	Downtown_Strathmore
City	Strathmore
County	Wheatland County
Province	Alberta
Postal Code	T1P 1N6

### **Amenities**

Amenities	Elevator(s), Party Room, Snow Removal, Trash, Visitor Parking
Parking Spaces	1
Parking	Stall

### **Interior**

Interior Features	No Smoking Home
Appliances	Dishwasher, Dryer, Electric Stove, Refrigerator, Washer
Heating	Baseboard, Hot Water
Cooling	None
# of Stories	3

## Exterior

Exterior Features	Balcony
Roof	Asphalt Shingle
Construction	Wood Frame

## Additional Information

Date Listed	December 4th, 2024
Days on Market	98
Zoning	R3

## Listing Details

Listing Office	CIR Realty
----------------	------------

Data is supplied by Pillar 9â„¢ MLSÂ® System. Pillar 9â„¢ is the owner of the copyright in its MLSÂ® System. Data is deemed reliable but is not guaranteed accurate by Pillar 9â„¢. The trademarks MLSÂ®, Multiple Listing ServiceÂ® and the associated logos are owned by The Canadian Real Estate Association (CREA) and identify the quality of services provided by real estate professionals who are members of CREA. Used under license.