

# \$649,000 - 160 Camden Court, Strathmore

MLS® #A2191711

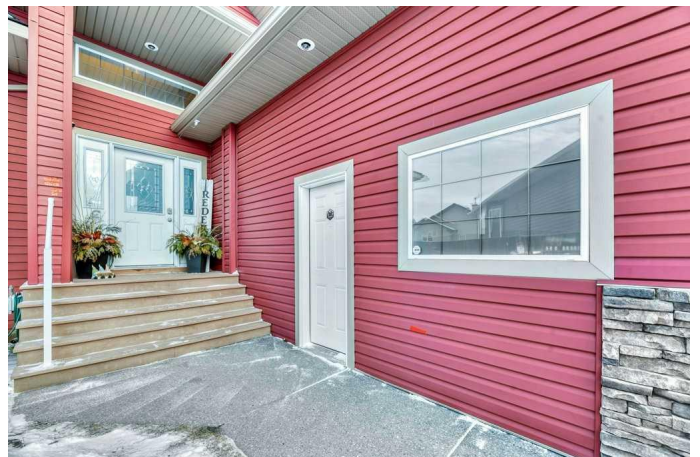
**\$649,000**

5 Bedroom, 3.00 Bathroom, 1,498 sqft  
Residential on 0.16 Acres

Cambridge Glen, Strathmore, Alberta

FULLY DEVELOPED | BUNGALOW | 5 BEDROOMS + 3 FULL BATHS | LARGE CUL-DE-SAC | EXTENDED DRIVEWAY WITH RV PARKING | HEATED GARAGE | AIR CONDITIONING | COUNTRY VIEWS & MORE | Welcome to 160 Camden Court! A spacious and fully developed Bungalow situated on a quiet cul-de-sac with stunning country views. This prime location offers ample space for children or grandchildren to bike, scoot, and play. The extended Driveway provides generous parking for multiple vehicles, including space for an RV, boat, or trailer.

The oversized, heated double-attached Garage (currently used as a Home Gym) could accommodate vehicles while offering additional storage space. Step inside to a welcoming Front Entry leading to the main floor, where vaulted ceilings and abundant natural light create an open and airy ambiance. The Living Room, Dining Area, and Kitchen flow seamlessly, making entertaining effortless. The Kitchen features granite countertops, an eat-up ledge for 4, additional cabinetry & counter space, and a built-in small appliance garage. A walk-through Pantry conveniently connects the Kitchen to the Mudroom/Laundry Room, simplifying grocery unloading. The Primary Bedroom is generously sized, complete with a 4-piece En-Suite featuring a soaker tub, separate shower, and walk-in closet. Bedroom #2 near the Front Entry offers versatility as a Home



Office, Den, or Hobby Room if preferred. The Central Staircase enhances the home's layout and leads to the fully developed Basement. Downstairs, you'll find an expansive Recreation/Family Room with a Gas Fireplace, a spacious Utility/Storage Room, another Full Bath, and Bedrooms #3, #4 & #5. The Backyard features a Deck with a Gas hookup for a BBQ, with stairs leading to a beautifully landscaped yardâ€”perfect for evenings around the firepit or tending to a future garden. Storage Shed included. Additionally with 2 furnaces, 2 hot water tanks, central vacuum, air conditioning and new shingles in November 2024, this home truly has it all. Conveniently located near schools, shopping, parks, and recreation, this is a fantastic opportunity you wonâ€™t want to miss. Book a viewing today!

Built in 2006

### **Essential Information**

MLS® #	A2191711
Price	\$649,000
Bedrooms	5
Bathrooms	3.00
Full Baths	3
Square Footage	1,498
Acres	0.16
Year Built	2006
Type	Residential
Sub-Type	Detached
Style	Bungalow
Status	Active

### **Community Information**

Address	160 Camden Court
Subdivision	Cambridge Glen
City	Strathmore
County	Wheatland County

Province Alberta  
Postal Code T1P 1Y1

### Amenities

Parking Spaces 6  
Parking Double Garage Attached, Driveway, Garage Faces Front, Heated Garage, Oversized, See Remarks  
# of Garages 2

### Interior

Interior Features Central Vacuum, Granite Counters, High Ceilings, Kitchen Island, No Smoking Home, Open Floorplan, Pantry, See Remarks, Soaking Tub, Storage, Vaulted Ceiling(s), Vinyl Windows, Walk-In Closet(s)  
Appliances Central Air Conditioner, Dishwasher, Dryer, Electric Stove, Microwave Hood Fan, Refrigerator, Washer, Window Coverings  
Heating Forced Air  
Cooling Central Air  
Fireplace Yes  
# of Fireplaces 1  
Fireplaces Basement, Gas  
Has Basement Yes  
Basement Finished, Full

### Exterior

Exterior Features Fire Pit, Other, Private Yard  
Lot Description Back Yard, Cul-De-Sac, Front Yard, Irregular Lot, Landscaped, Lawn, Pie Shaped Lot  
Roof Asphalt Shingle  
Construction Stone, Vinyl Siding  
Foundation Poured Concrete

### Additional Information

Date Listed February 5th, 2025  
Days on Market 58  
Zoning R1

### Listing Details

Listing Office RE/MAX Realty Professionals

Data is supplied by Pillar 9â„¢ MLSÂ® System. Pillar 9â„¢ is the owner of the copyright in its MLSÂ® System. Data is deemed reliable but is not guaranteed accurate by Pillar 9â„¢. The trademarks MLSÂ®, Multiple Listing ServiceÂ® and

the associated logos are owned by The Canadian Real Estate Association (CREA) and identify the quality of services provided by real estate professionals who are members of CREA. Used under license.