

\$818,300 - 1140 Sailfin Heath, Rural Rocky View County

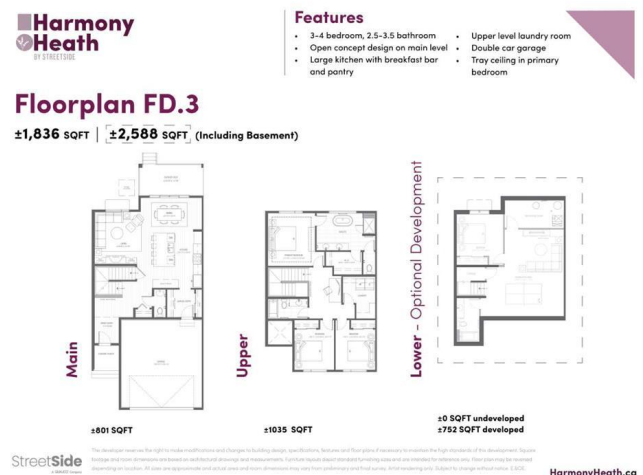
MLS® #A2193029

\$818,300

4 Bedroom, 4.00 Bathroom, 1,836 sqft
Residential on 0.02 Acres

Harmony, Rural Rocky View County, Alberta

Welcome to 1140 in Harmony Heath—the ideal home for your family to grow, thrive, and create lifelong memories. Designed with every family member in mind, this home offers a blend of comfort, style, and convenience that’s hard to beat. This FD.3 floor plan and interior unit home include a fully developed basement, a double attached garage, and a walk-through mudroom featuring handy pantry shelving and lockers. The expansive 33' driveway ensures plenty of room for your vehicles. Step outside to a 16' x 8' covered deck and a large, sodded backyard enclosed by a privacy fence, seamlessly blending into developer-installed wrought iron fencing along the greenspace. Inside, the kitchen is a chef’s dream with full-height dual-tone cabinets in dark grey and an oak finish, complete with Samsung appliances and a gas line. The adjacent, spacious living room is perfect for family gatherings. The basement, with 9' ceilings, has plenty of space for a TV lounge and room for air hockey or a ping pong table. The upper-level primary suite is your peaceful sanctuary with beautiful green space views, a freestanding bathtub, and a luxurious 10mm glass shower. Laundry days are more manageable with an upgraded side-by-side washer and dryer to tackle those everyday chores. Living in Harmony Heath means benefiting from top-rated schools with convenient bus pick-up and a community filled with activities: an adventure park, skate park,



climbing wall, and over 27 km of paved pathways. Plus, enjoy water activities at both lakes and an off-leash dog park. Please visit us at our showhome at 1002 Harmony Parade to tour a similar home today and choose a community that supports the balance youâ€™ve always dreamed of, welcome to your next adventure. For a limited time, use StreetSideâ€™s current promotion and take \$15K off the purchase price. 45 Minutes East of Canmore and 15 Minutes west of Calgary. Possession upon completion, October 2025, May 2026.

Built in 2025

Essential Information

MLS® #	A2193029
Price	\$818,300
Bedrooms	4
Bathrooms	4.00
Full Baths	3
Half Baths	1
Square Footage	1,836
Acres	0.02
Year Built	2025
Type	Residential
Sub-Type	Row/Townhouse
Style	2 Storey
Status	Active

Community Information

Address	1140 Sailfin Heath
Subdivision	Harmony
City	Rural Rocky View County
County	Rocky View County
Province	Alberta
Postal Code	T3Z0J1

Amenities

Amenities	Beach Access, Clubhouse, Community Gardens, Day Care, Dog Park, Golf Course
Parking Spaces	4
Parking	Double Garage Attached
# of Garages	4

Interior

Interior Features	Walk-In Closet(s), High Ceilings, Quartz Counters, Storage
Appliances	Dishwasher, Range Hood, Refrigerator, Washer/Dryer, Electric Range, Stove(s)
Heating	Forced Air
Cooling	None
Has Basement	Yes
Basement	Full, Finished

Exterior

Exterior Features	Private Entrance, Private Yard
Lot Description	Back Yard, Landscaped
Roof	Asphalt Shingle
Construction	Wood Frame, Concrete
Foundation	Poured Concrete

Additional Information

Date Listed	February 6th, 2025
Days on Market	55
Zoning	TBD
HOA Fees	137
HOA Fees Freq.	MON

Listing Details

Listing Office	Grassroots Realty Group
----------------	-------------------------

Data is supplied by Pillar 9â„¢ MLSÂ® System. Pillar 9â„¢ is the owner of the copyright in its MLSÂ® System. Data is deemed reliable but is not guaranteed accurate by Pillar 9â„¢. The trademarks MLSÂ®, Multiple Listing ServiceÂ® and the associated logos are owned by The Canadian Real Estate Association (CREA) and identify the quality of services provided by real estate professionals who are members of CREA. Used under license.